

# TC-H1600

## SERVICE MANUAL

US Model  
 Canadian Model  
 AEP Model  
 UK Model  
 E Model  
 Australian Model



This set is the deck section in  
 MHC-H1600, FH-E636CD.

Model Name Using Similar Mechanism	TC-WR520/WR520S	
Tape Transport Mechanism Type	DECK A	TCM-190RA12A
	DECK B	TCM-190RB22A

### SPECIFICATIONS

#### Cassette Deck Section

Recording system 4-track 2-channel stereo  
 Frequency response (DOLBY NR OFF)  
 40 — 13,000 Hz ( $\pm 3$  dB)  
 using TYPE I cassette  
 (Sony HF-S)  
 40 — 14,000 Hz ( $\pm 3$  dB)  
 using TYPE II cassette  
 Wow and flutter 0.1% WRMS  $\pm 0.3\%$  (DIN)

Design and specifications subject to change without notice.

#### Note

This appliance conforms with EEC Directive 87/308/EEC regarding interference suppression.



STEREO CASSETTE DECK  
**SONY**<sup>®</sup>

**TABLE OF CONTENTS**

<u>Section</u>	<u>Title</u>	<u>Page</u>
<b>1. GENERAL</b>		
1-1.	Parts Identification.....	3
<b>2. DISASSEMBLY</b>		
2-1.	Back Panel Removal.....	4
<b>3. ADJUSTMENTS</b>		
3-1.	Mechanical Adjustments.....	5
3-2.	Electrical Adjustments.....	5
<b>4. DIAGRAMS</b>		
4-1.	Circuit Boards Location.....	9
4-2.	Semiconductor Lead Layouts.....	10
4-3.	Printed Wiring Boards -US, Canadian, E Model-.....	11
4-4.	Schematic Diagram -US, Canadian, E Model-.....	15
4-5.	Printed Wiring Boards -AEP, UK, Germany, Australian Model-.....	21
4-6.	Schematic Diagram -AEP, UK, Germany, Australian Model-.....	25
<b>5. EXPLODED VIEWS</b>		
5-1.	Chassis Section.....	32
5-2.	Mechanism Section-1.....	33
5-3.	Mechanism Section-2.....	34
<b>6. ELECTRICAL PARTS LIST</b>		35



**Flexible Circuit Board Repairing**

- Keep the temperature of the soldering iron around 270°C during repairing.
- Do not touch the soldering iron on the same conductor of the circuit board (within 3 times).
- Be careful not to apply force on the conductor when soldering or unsoldering.


**Notes on chip component replacement**

- Never reuse a disconnected chip component.
- Notice that the minus side of a tantalum capacitor may be damaged by heat.

**SAFETY-RELATED COMPONENT WARNING!!**

COMPONENTS IDENTIFIED BY MARK  OR DOTTED LINE WITH MARK  ON THE SCHEMATIC DIAGRAMS AND IN THE PARTS LIST ARE CRITICAL TO SAFE OPERATION. REPLACE THESE COMPONENTS WITH SONY PARTS WHOSE PART NUMBERS APPEAR AS SHOWN IN THIS MANUAL OR IN SUPPLEMENTS PUBLISHED BY SONY.

**ATTENTION AU COMPOSANT AYANT RAPPORT À LA SÉCURITÉ!**

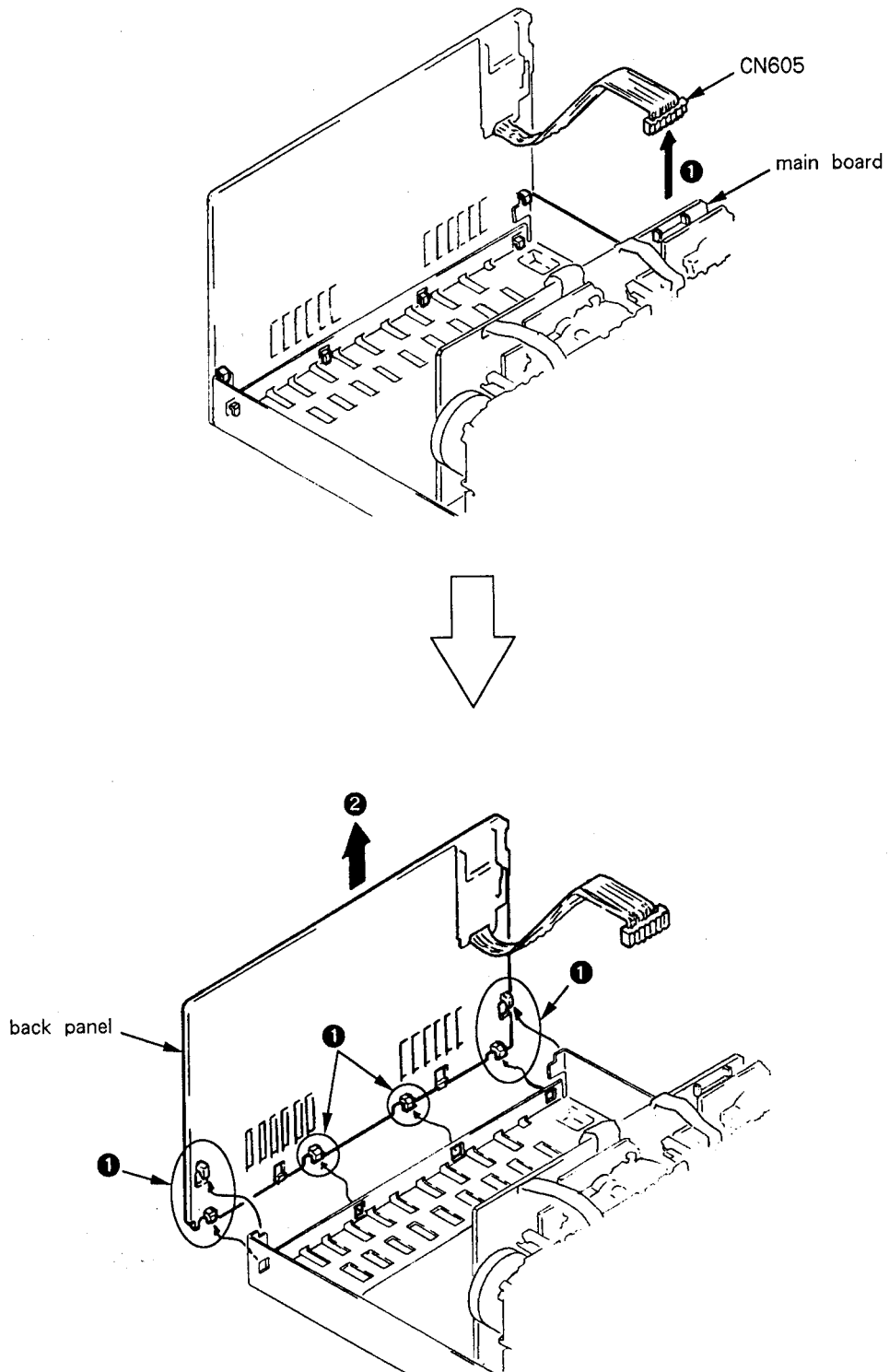
LES COMPOSANTS IDENTIFIÉS PAR UNE MARQUE  SUR LES DIAGRAMMES SCHÉMATIQUES ET LA LISTE DES PIÈCES SONT CRITIQUES POUR LA SÉCURITÉ DE FONCTIONNEMENT. NE REMPLACER CES COMPOSANTS QUE PAR DES PIÈCES SONY DONT LES NUMÉROS SONT DONNÉS DANS CE MANUEL OU DANS LES SUPPLÉMENTS PUBLIÉS PAR SONY.

## SECTION 2 DISASSEMBLY

### 2-1. BACK PANEL REMOVAL

**Note:** Follow the disassembly procedure in the numerical order given.

- ① Remove the connector of the main board (CN605).
- ② Release the latches while lifting up back panel.



# SECTION 3 ADJUSTMENTS

## 3-1. MECHANICAL ADJUSTMENTS

### PRECAUTION

1. Clean the following parts with a denatured-alcohol-moistened swab :
 

record/playback head	pinch roller
erase head	rubber belts
capstan	idler
2. Demagnetize the record/playback head with a head demagnetizer.
3. Do not use a magnetized screwdriver for the adjustments.
4. After the adjustments, apply suitable locking compound to the parts adjusted.
5. The adjustments should be performed in the rated power supply voltage unless otherwise noted.

### Torque Measurement

Torque	Torque meter	Meter reading
FWD	CQ-102C	35 to 60g · cm (0.49 to 0.83 oz · inch)
FWD Back tension	CQ-102C	2 to 6g · cm (0.028 to 0.08 oz · inch)
REV	CQ-102RC	35 to 60g · cm (0.49 to 0.83 oz · inch)
REV Back tension	CQ-102RC	2 to 6g · cm (0.028 to 0.08 oz · inch)
FF, REW	CQ-201B	70 to 110g · cm (0.98 to 1.52 oz · inch)

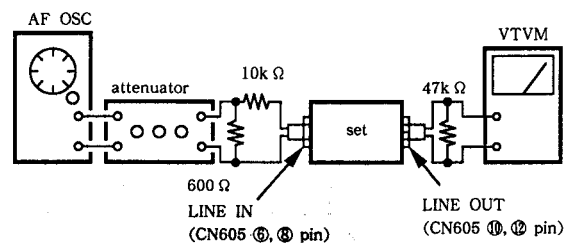
## 3-2. ELECTRICAL ADJUSTMENT

**Note :** The adjustment should be performed in the order given in the service manual. As a rule, adjustment about playback should be performed before adjustment about recording.

The adjustments should be performed for both L-CH and R-CH.

- Switches and controls should be set as follows unless otherwise specified.
  - DOLBY NR switch : OFF
  - DIRECTION mode switch :  $\rightleftharpoons$
- Standard Record :
  - Deliver the standard input signal level to the input jack and set the REC LEVEL control to obtain the standard output signal level.

### — Record Mode —



### Standard Input Level

input terminal	LINE IN
source impedance	10kΩ
input level	0.25V (-10dB)

### Standard Output Level

output terminal	LINE OUT
load impedance	47kΩ
output level	0.35V (-7dB)

### Test tape

Type	Signal	Used for
P-4-A100	10kHz, -10dB	Azimuth Adjustment
P-4-L300	315Hz, 0dB	PB Level Adjustment
WS-48B	3kHz, 0dB	Tape Speed Adjustment

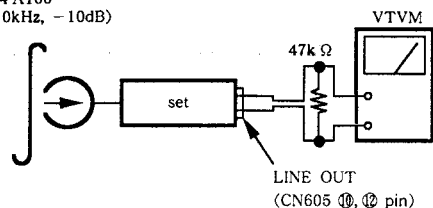
### Record/Playback Head Azimuth Adjustment

**DECK A**   **DECK B**

#### Procedure :

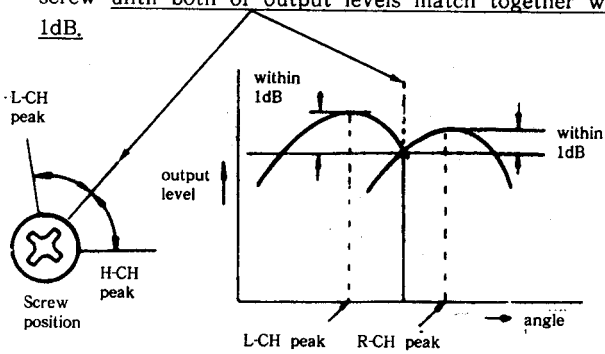
1. Mode : FWD playback

test tape  
P-4-A100  
(10kHz, -10dB)

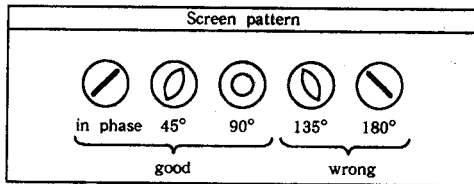
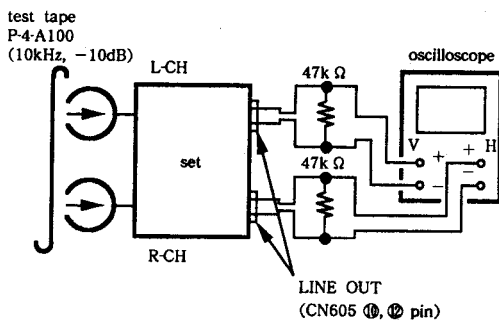




- Turn the adjustment screw for the maximum output levels. If these levels do not match, turn the adjustment screw until both of output levels match together within 1dB.

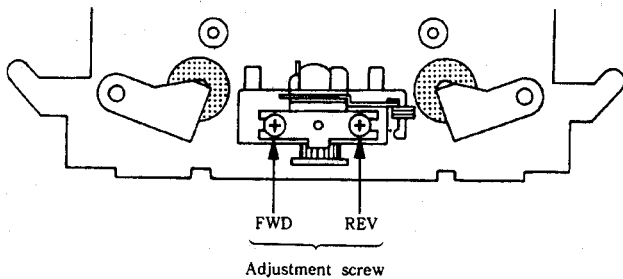


- Phase Check  
Mode : playback



- Set in the REV mode and repeat the step 1-3.
- After the adjustment, lock the screws with locking compound.

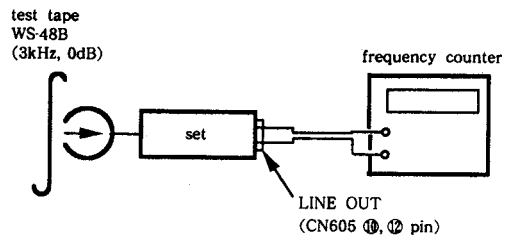
Adjustment Location : Record/Playback head



## Tape Speed Adjustment DECK A DECK B

### Procedure :

Mode : playback



Perform high speed adjustment before normal speed adjustment

### (high speed adjustment)

- Set to FWD playback mode.
- Keep on pressing the HIGH SPEED DUBBING switch.
- Adjust the RV72A (DECK A), RV72B (DECK B) so that the frequency counter reading becomes  $6,000 \pm 30\text{Hz}$ .
- Set in the REV mode and repeat the step 1-3.

### (normal speed adjustment)

- Set to FWD playback mode.
- Keep on pressing the NORMAL SPEED DUBBING switch.
- Adjust the RV71A (DECK A), RV71B (DECK B) so that the frequency counter reading becomes  $3,000 \pm 15\text{Hz}$ .
- Set in the REV mode and repeat the step 1-3.

Frequency difference between the beginning and the end of the tape, should be within 3%.

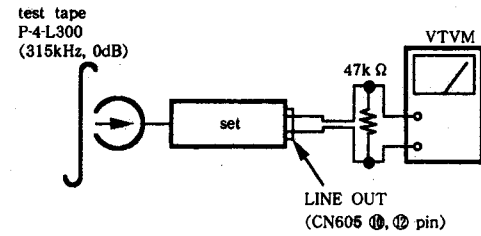
Frequency difference between deck A and deck B the beginning of the tape should be within 1%.

Adjustment Location : MD (A), MD (B) board

**Playback Level Adjustment** DECK A DECK B

**Procedure :**

Mode : playback



Adjust RV11 (L-CH), RV21 (R-CH) so that the reading on VTVM meets the adjustment limits below.

**Adjustment Limits :**

LINE OUT level :  $-7 \pm 1\text{dB}$  (0.39-0.31dB)

Level difference between channels : less than 1dB

Check that the LINE OUT level does not change in playback mode while changing the mode from playback to stop several times.

**Adjustment Location :** MD (A), MD (B) board

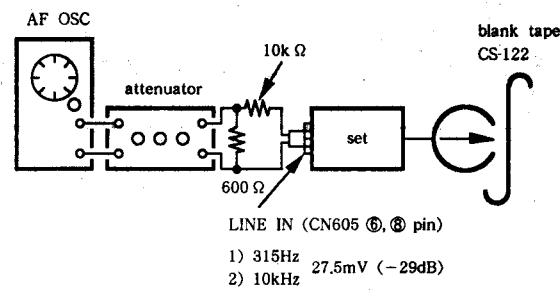
**Record Bias Adjustment** DECK A DECK B

**Setting :**

REC LEVEL control : Standard Record (See page 5).

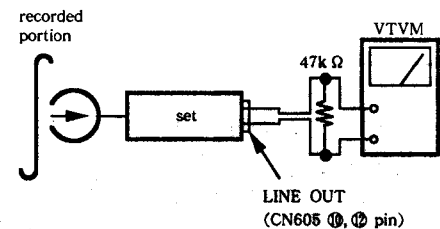
**Procedure :**

1. Mode : record



1) 315Hz 27.5mV (-29dB)  
2) 10kHz

2. Mode : playback



Playback the signal recorded in step 1. Confirm that the 10kHz playback output is  $0 \pm 0.5\text{dB}$  relative to the 315Hz output. If necessary, adjust RV12 (L-CH), RV22 (R-CH) and repeat the steps given above.

**Adjustment Location :** MD (B) board

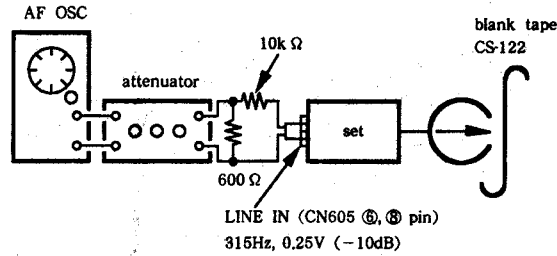
**Record Level Adjustment** DECK A DECK B

**Setting :**

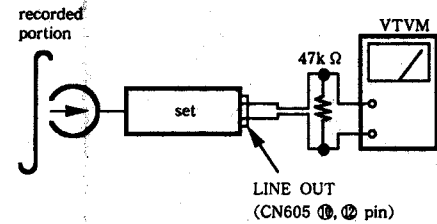
REC LEVEL control : Standard Record (See page 5).

**Procedure :**

1. Mode : record



2. Mode : playback

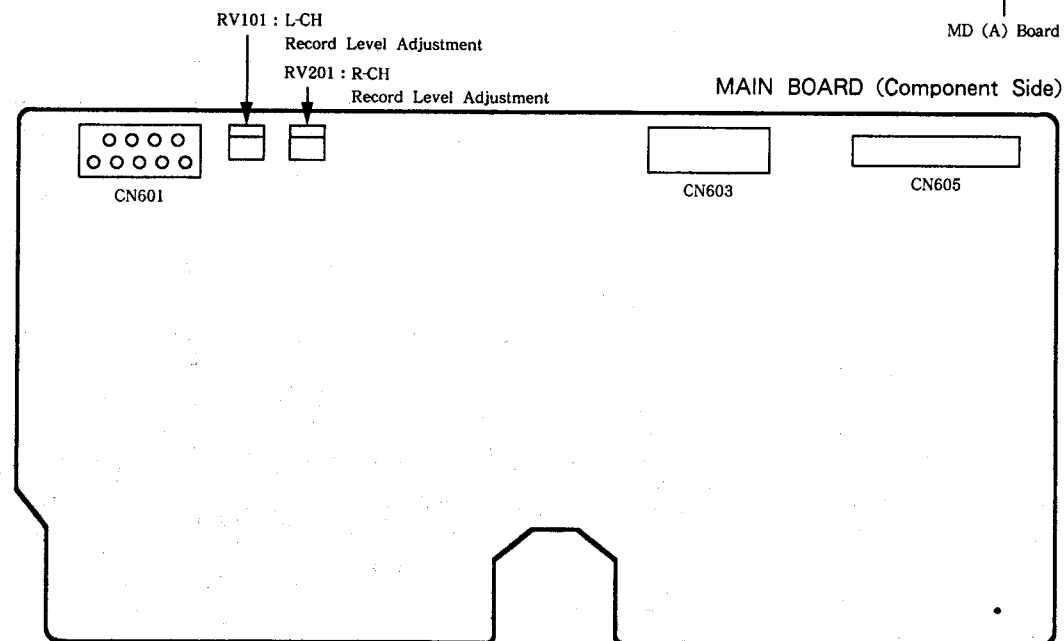


3. Playback the signal recorded in step 1.

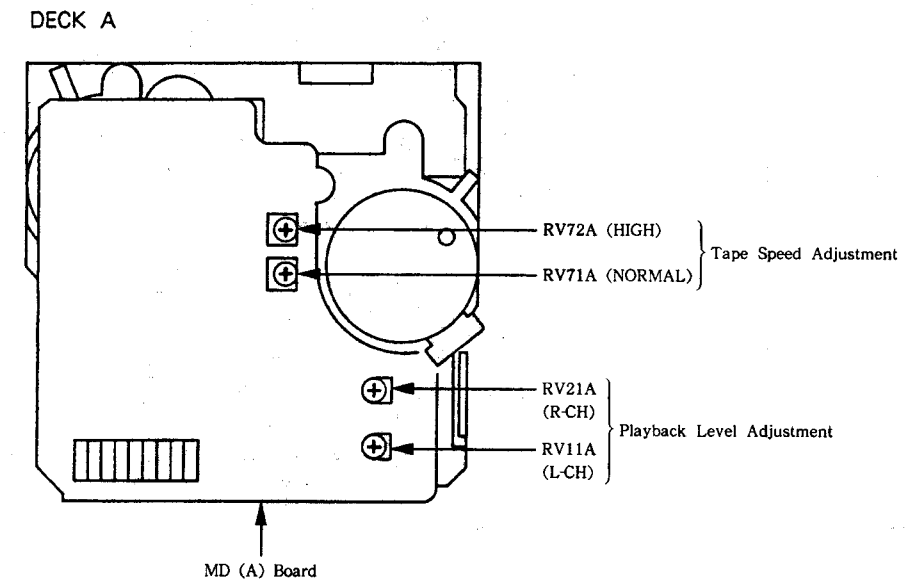
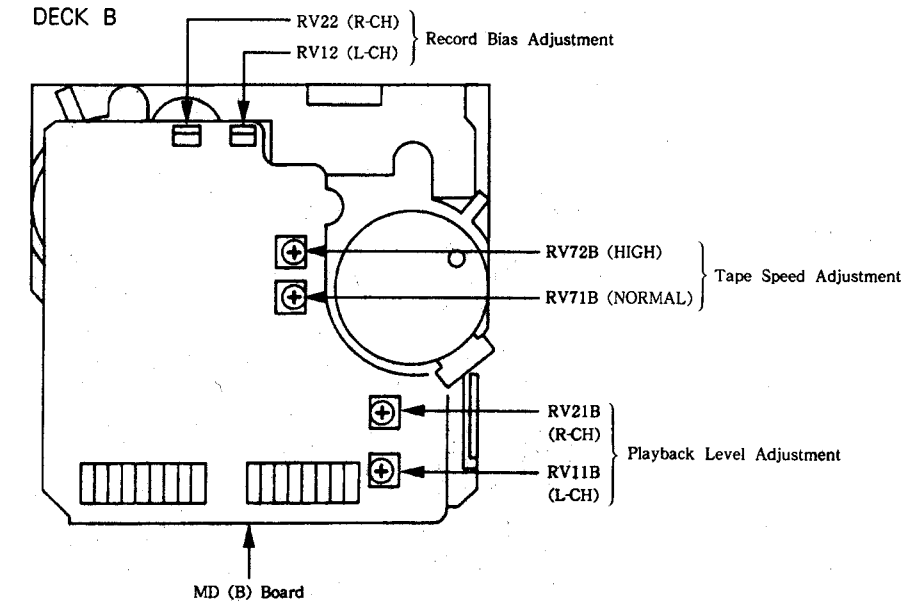
Confirm that the signal level is within the adjustment limits below. If necessary, adjust RV101 (L-CH), RV201 (R-CH) and repeat the step 1-3.

**Adjustment Limits :**  $-7\text{dB} \pm 0.5\text{dB}$  (0.33-0.36V)

**Adjustment Location :** MAIN board

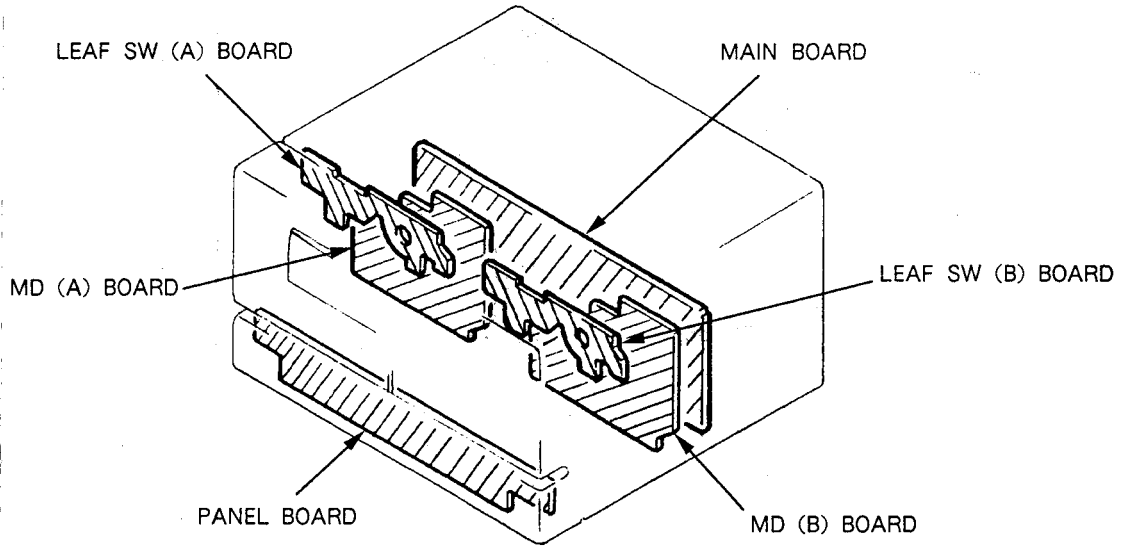


**Adjustment Location :** MD (B) board

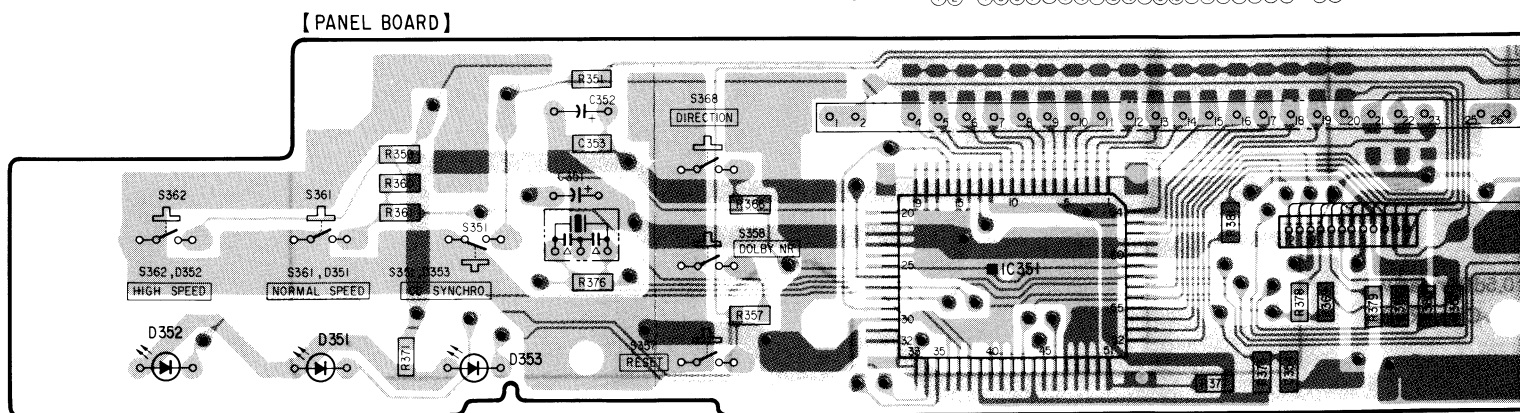
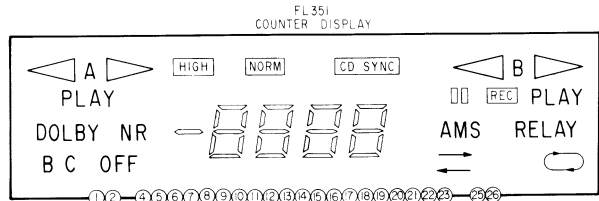
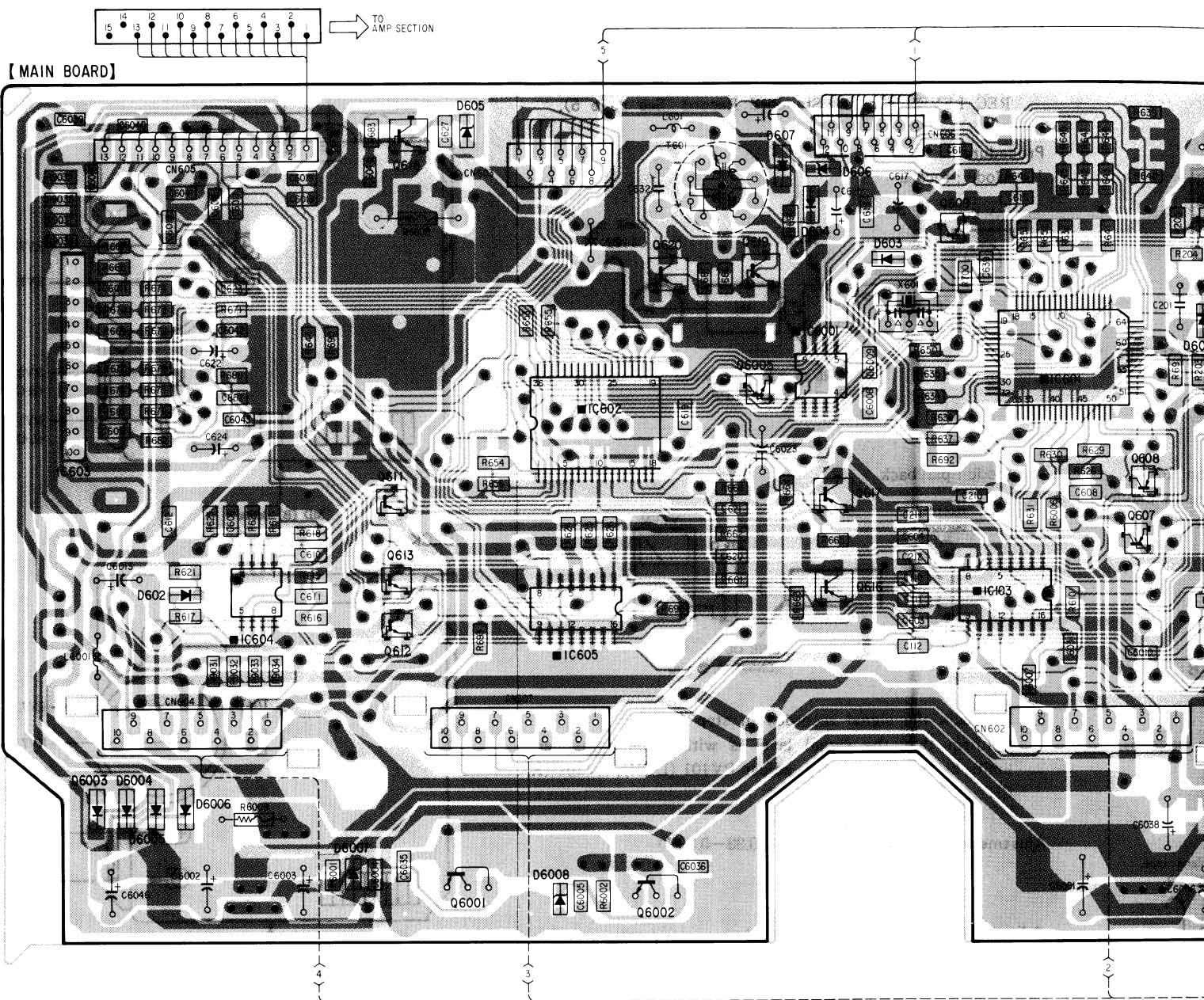


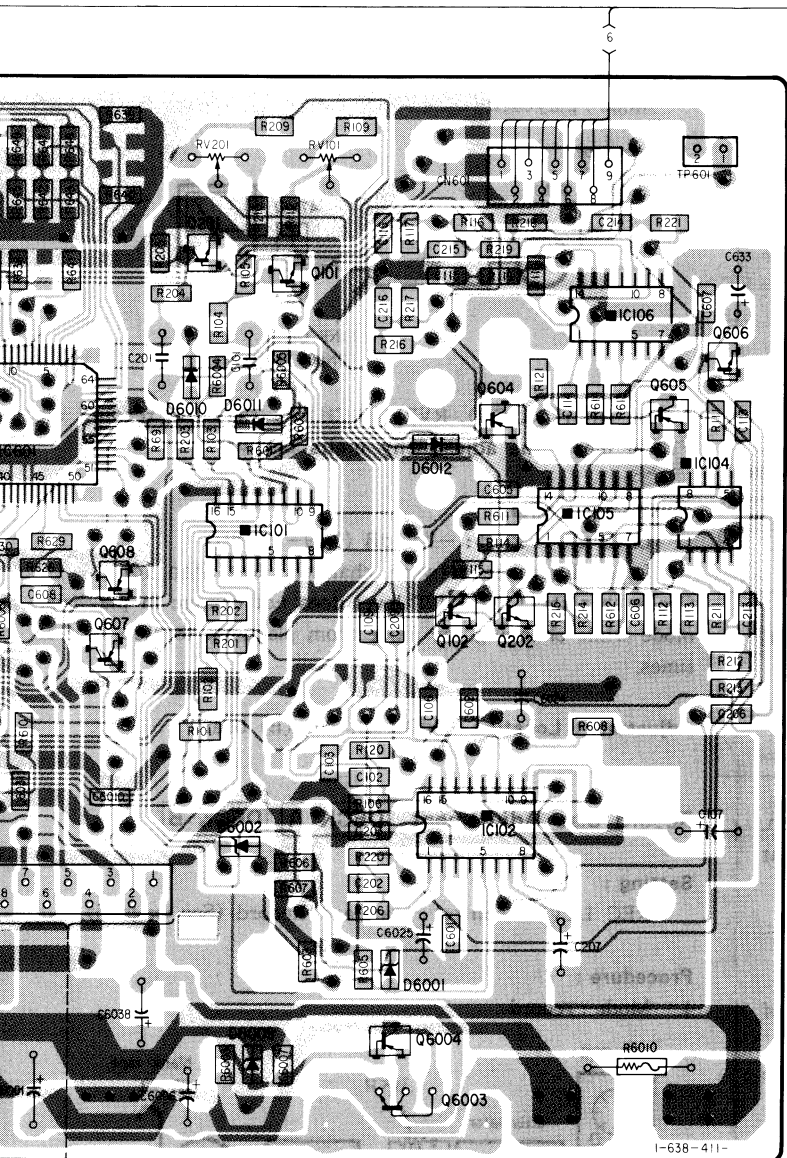
# SECTION 4 DIAGRAMS

## 4-1. CIRCUIT BOARDS LOCATION



1 2 3 4 5 6 7 8 9

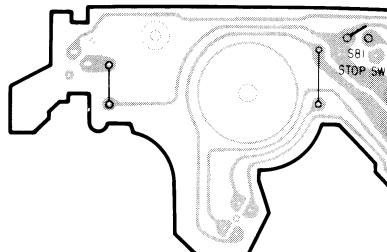




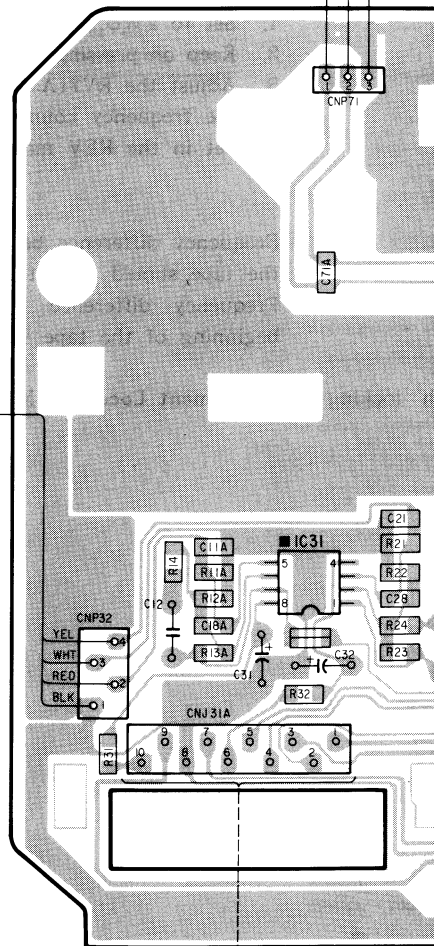
I-638-411

13

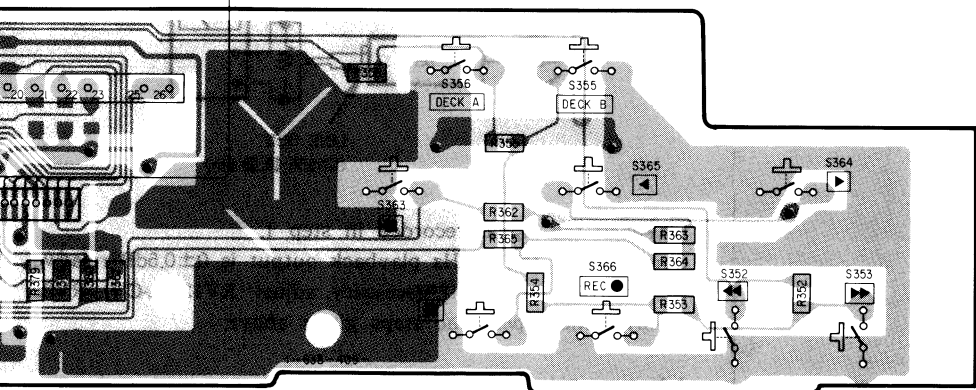
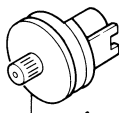
[LEAF SW(A) BOARD]



[AUDIO BOARD(DECK A)]

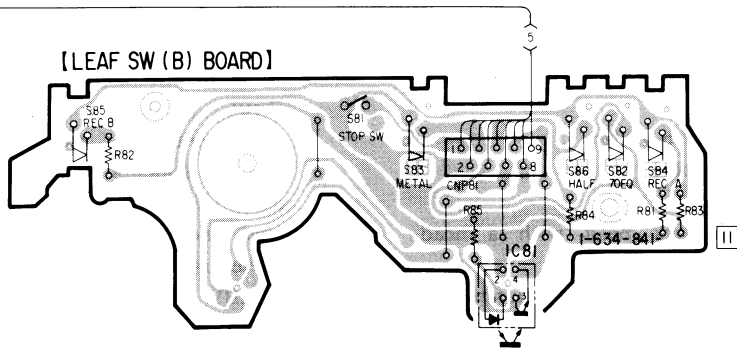


HP 901  
PLAYBACK HEAD

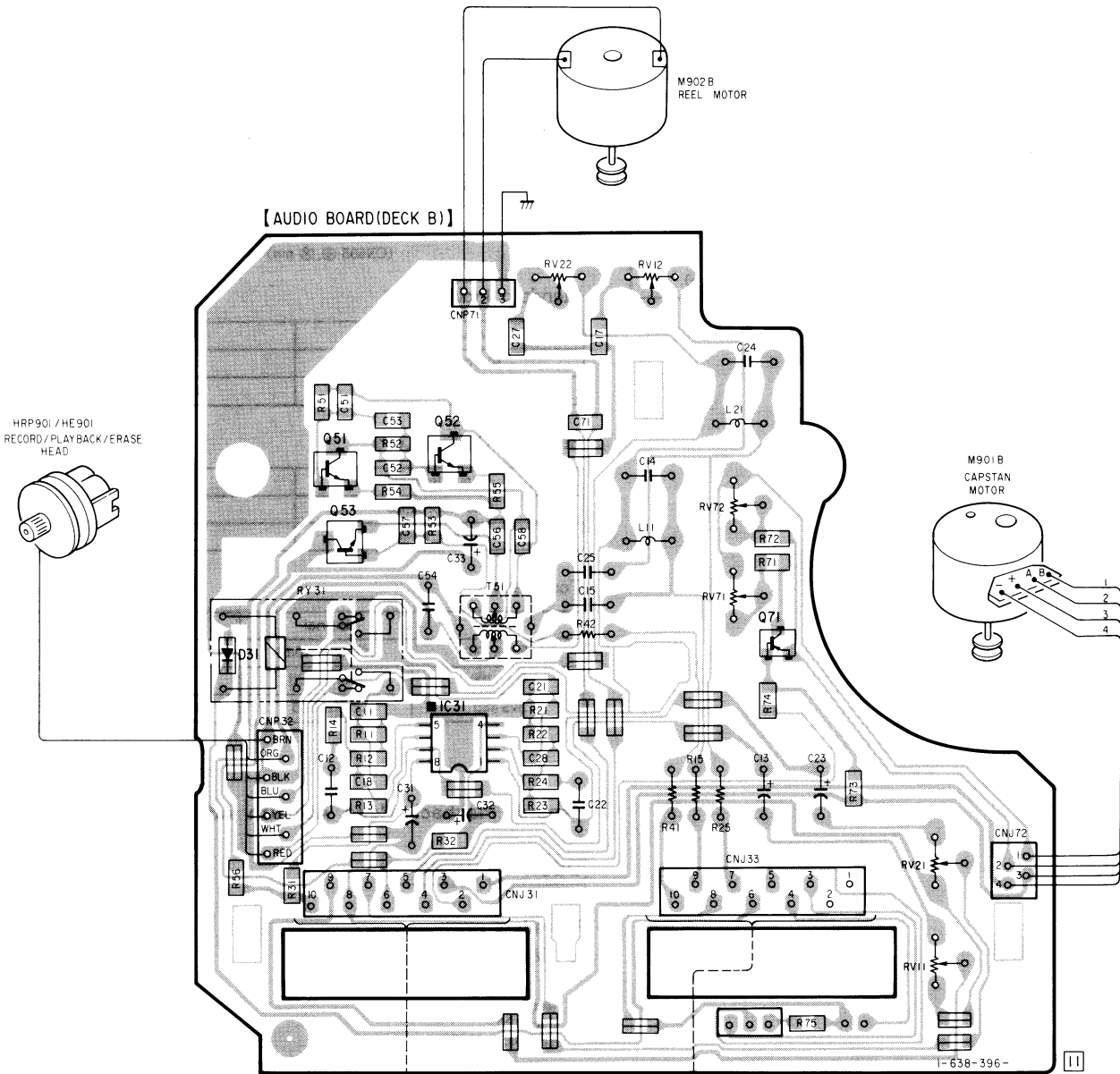


11

[ LEAF SW (B) BOARD ]

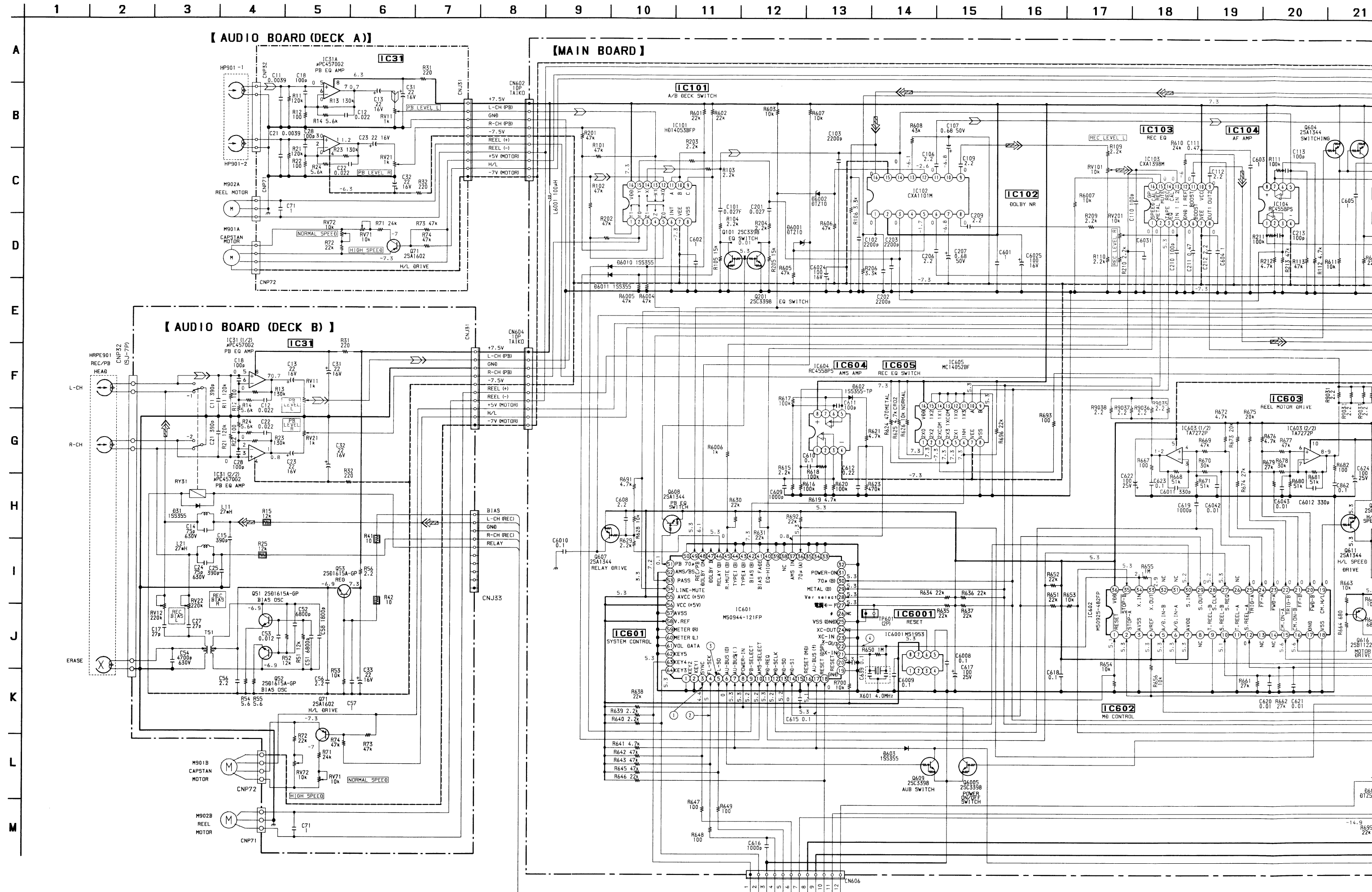


[ AUDIO BOARD (DECK B) ]



DECK - B



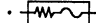






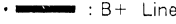


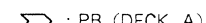

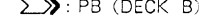


Note on Schematic Diagram :

- All capacitors are in  $\mu F$  unless otherwise noted. pF :  $\mu \mu F$   
50WV or less are not indicated except for electrolytics and tantalums.
- All resistors are in  $\Omega$  and  $\frac{1}{4}W$  or less unless otherwise specified.
- $\Delta$  : internal component.
-  : fusible resistor.

**Note:**  
The components identified by mark  $\Delta$  or dotted line with mark  $\Delta$  are critical for safety. Replace only with part number specified.

**Note:**  
Les composants identifiés par une marque  $\Delta$  sont critiques pour la sécurité. Ne les remplacer que par une pièce portant le numéro spécifié.

-  : B+ Line
-  : B- Line
-  : adjustment for repair.
- Voltage and waveforms are dc with respect to ground under no-signal conditions.  
no mark : STOP
- Voltages are taken with a VOM (Input impedance 10M  $\Omega$ ). Voltage variations may be noted due to normal production tolerances.
- Waveforms are taken with an oscilloscope. Voltage variations may be noted due to normal production tolerances.
- Circled numbers refer to waveforms.
- Signal path.
-  : PB (DECK A)
-  : PB (DECK B)
-  : REC (DECK B)

Ref. No.	Location	Ref. No.	Location
D31	H-23	Q51	G-23
D351	K-3	Q52	G-24
D352	K-2	Q53	G-23
D353	K-4	Q101	B-10
D601	F-10	Q102	D-11
D602	E-2	Q201	B-10
D603	C-7	Q202	D-11
D604	B-7	Q601	F-10
D605	B-4	Q602	F-10
D606	B-7	Q603	F-11
D607	B-6	Q604	C-11
D6003	F-2	Q605	C-12
D6004	F-2	Q606	C-12
D6005	F-2	Q607	E-9
D6006	F-2	Q608	D-9
D6007	G-3	Q609	B-8
D6008	G-5	Q611	D-4
D6009	G-10	Q612	E-4
D6010	C-9	Q613	E-4
D6011	C-10	Q616	E-7
D6012	C-11	Q617	D-7
		Q618	B-4
		Q619	C-6
IC101	D-10	Q620	C-6
IC102	E-11	Q6001	G-4
IC103	E-8		
IC104	D-12		
IC105	D-12	Q6002	G-6
		Q6003	G-11
		Q6004	G-11
		Q6005	C-6
IC106	C-12		
IC351	J-7		
IC601	C-8		
IC602	D-5		
IC603	C-1		
IC604	E-3		
IC605	E-5		
IC6001	C-7		






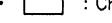
Ref. No.	Location
IC81	B-18

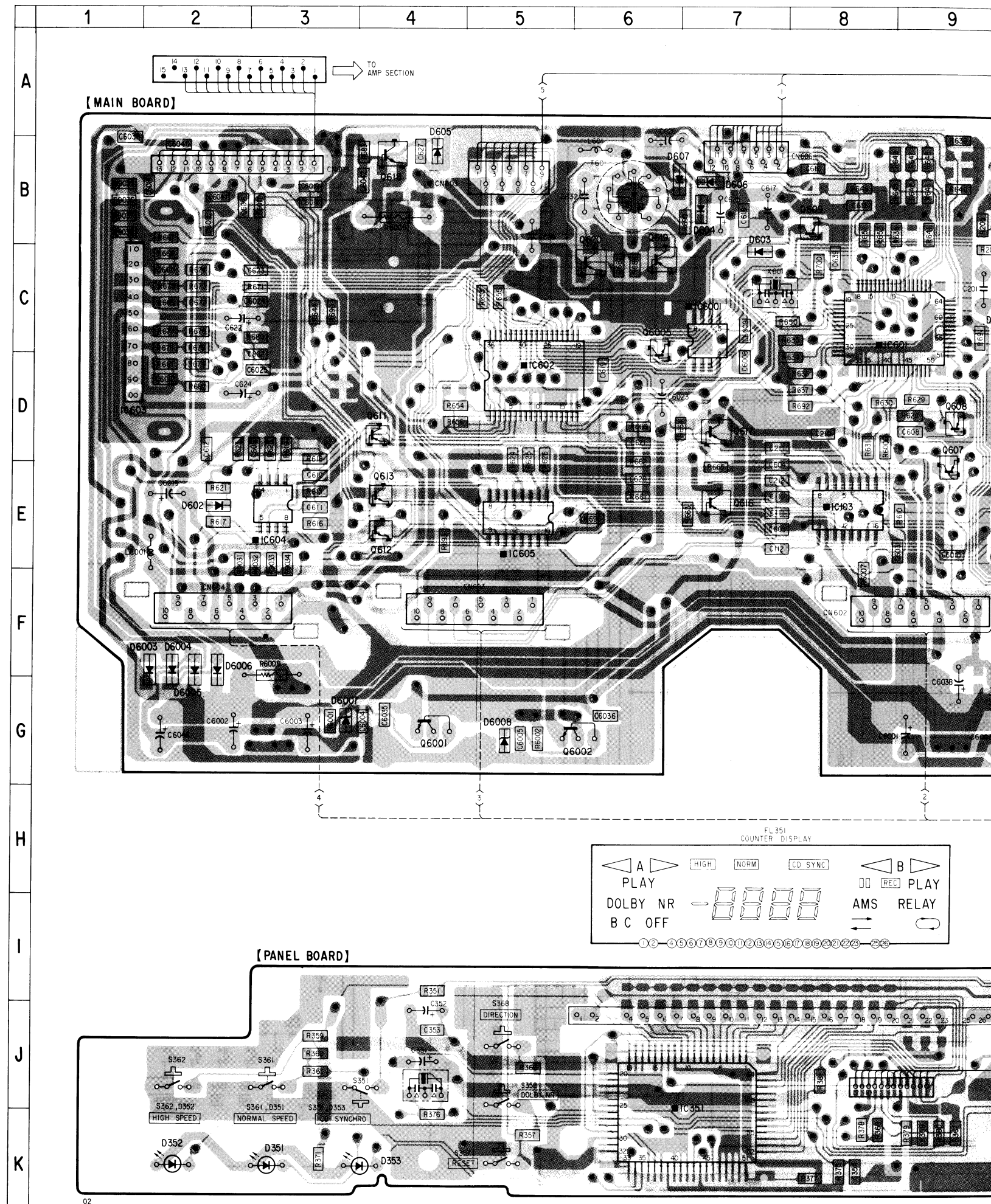
Ref. No.	Location
IC81	B-26

Ref. No.	Location
IC31	H-17
Q71	H-19

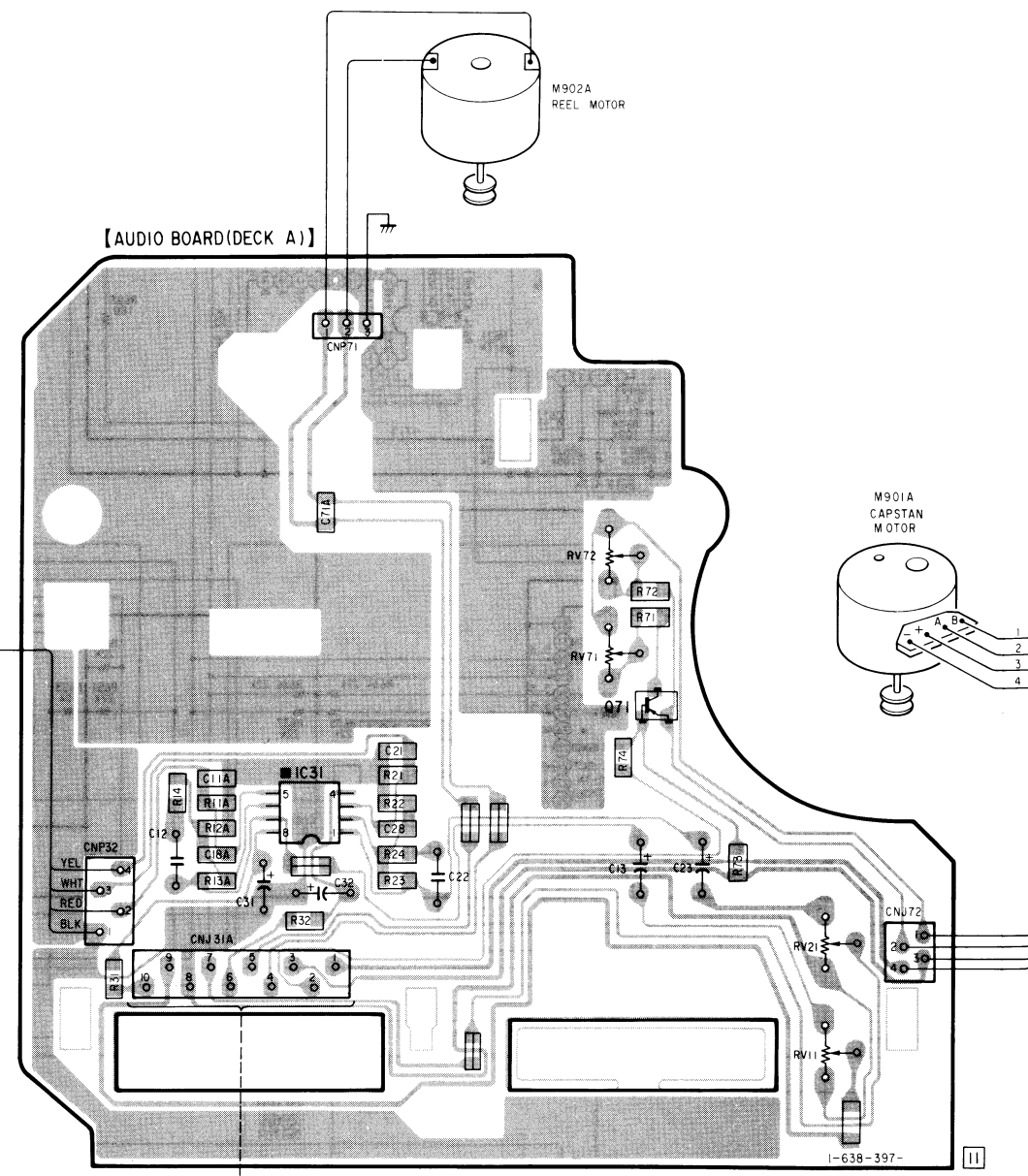
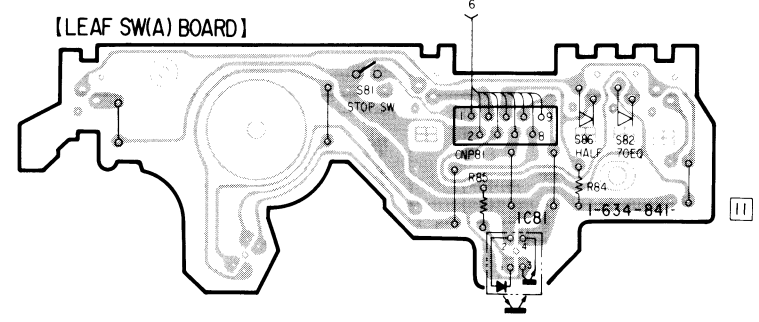
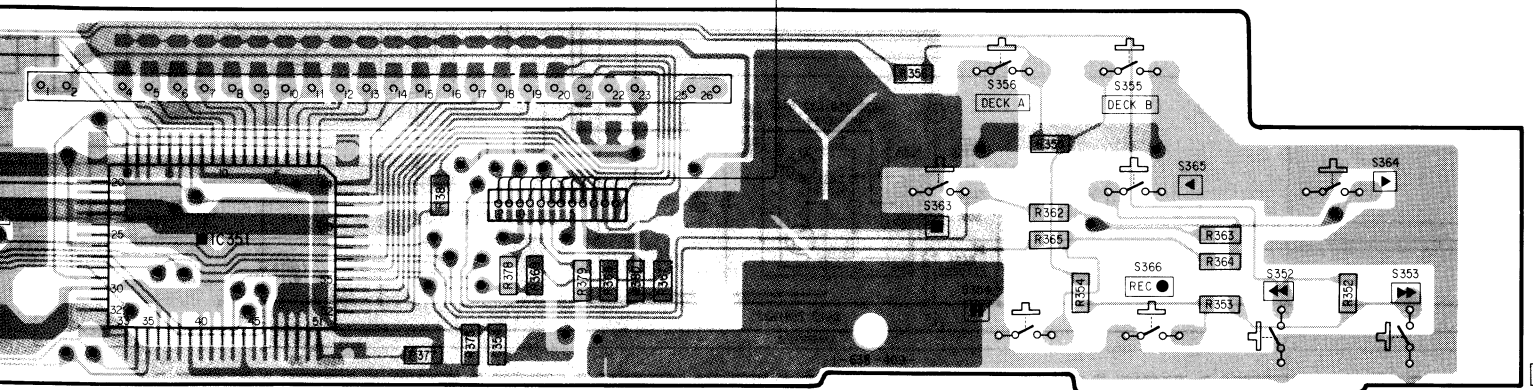
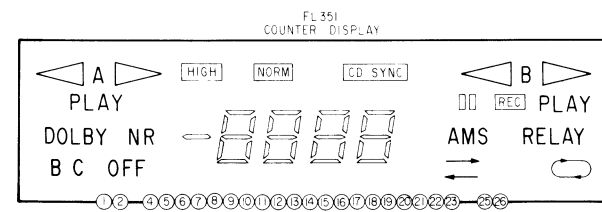
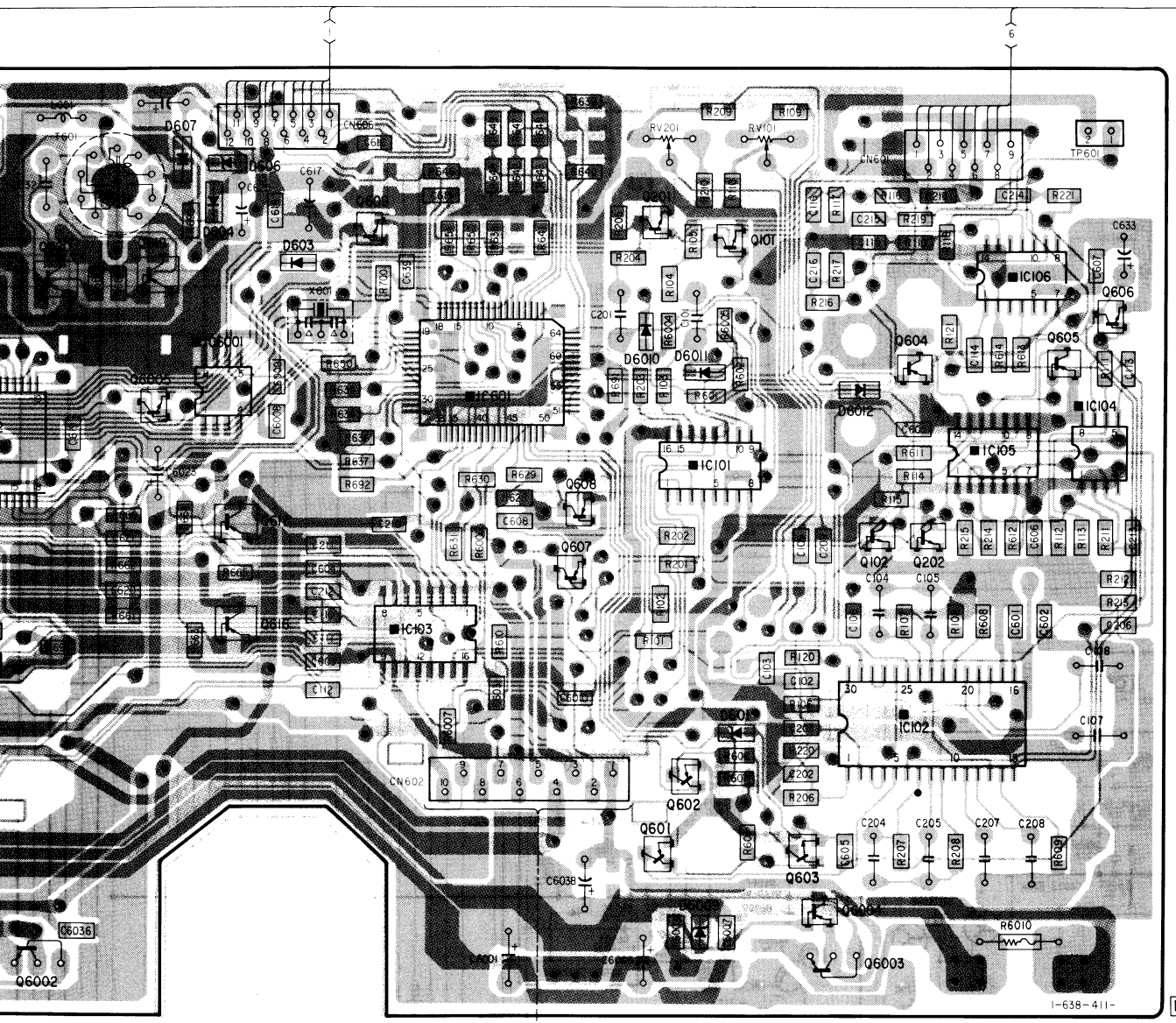
Ref. No.	Location
IC31	H-24
Q71	H-26

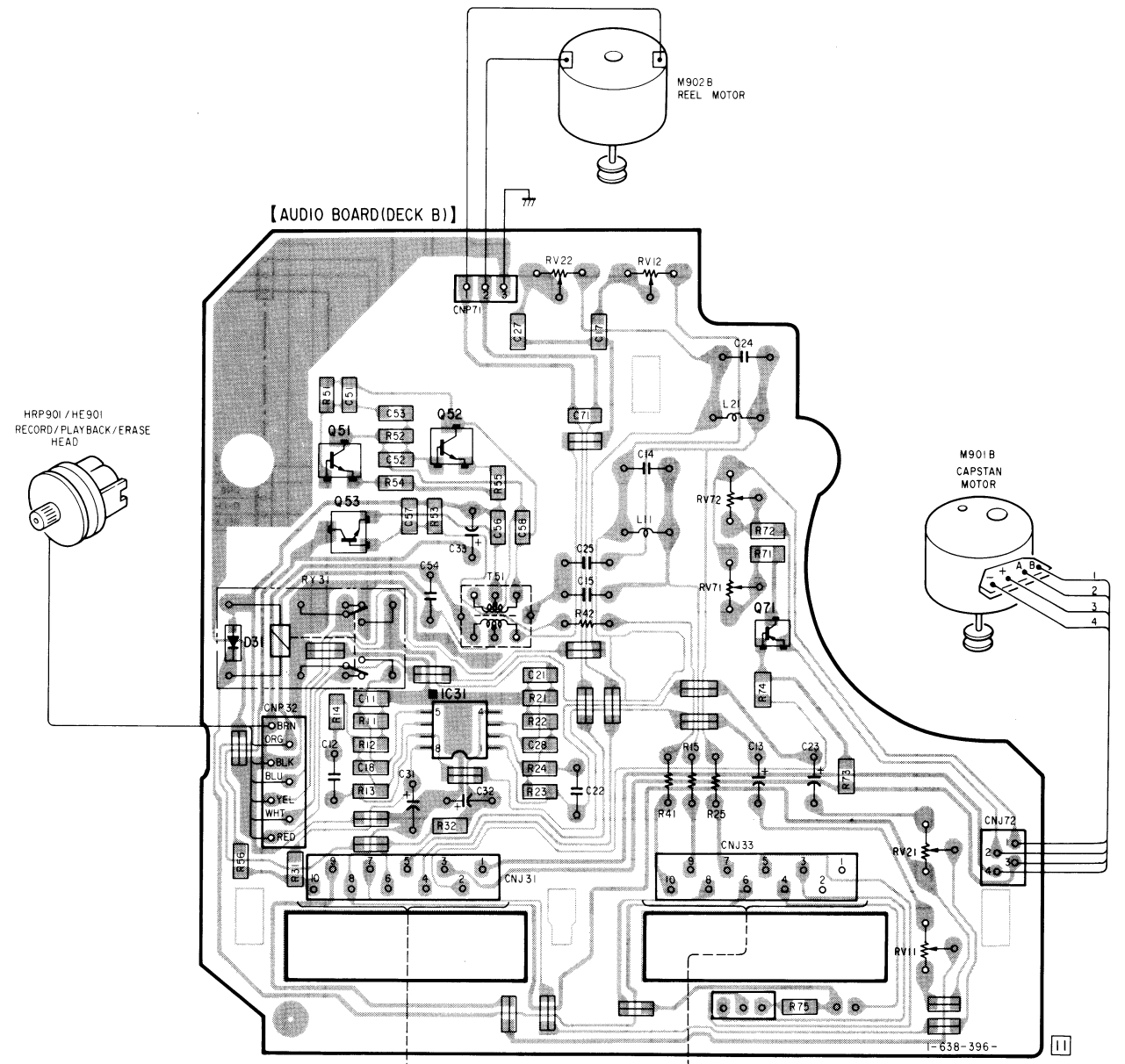
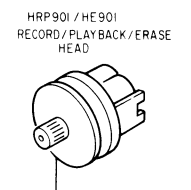
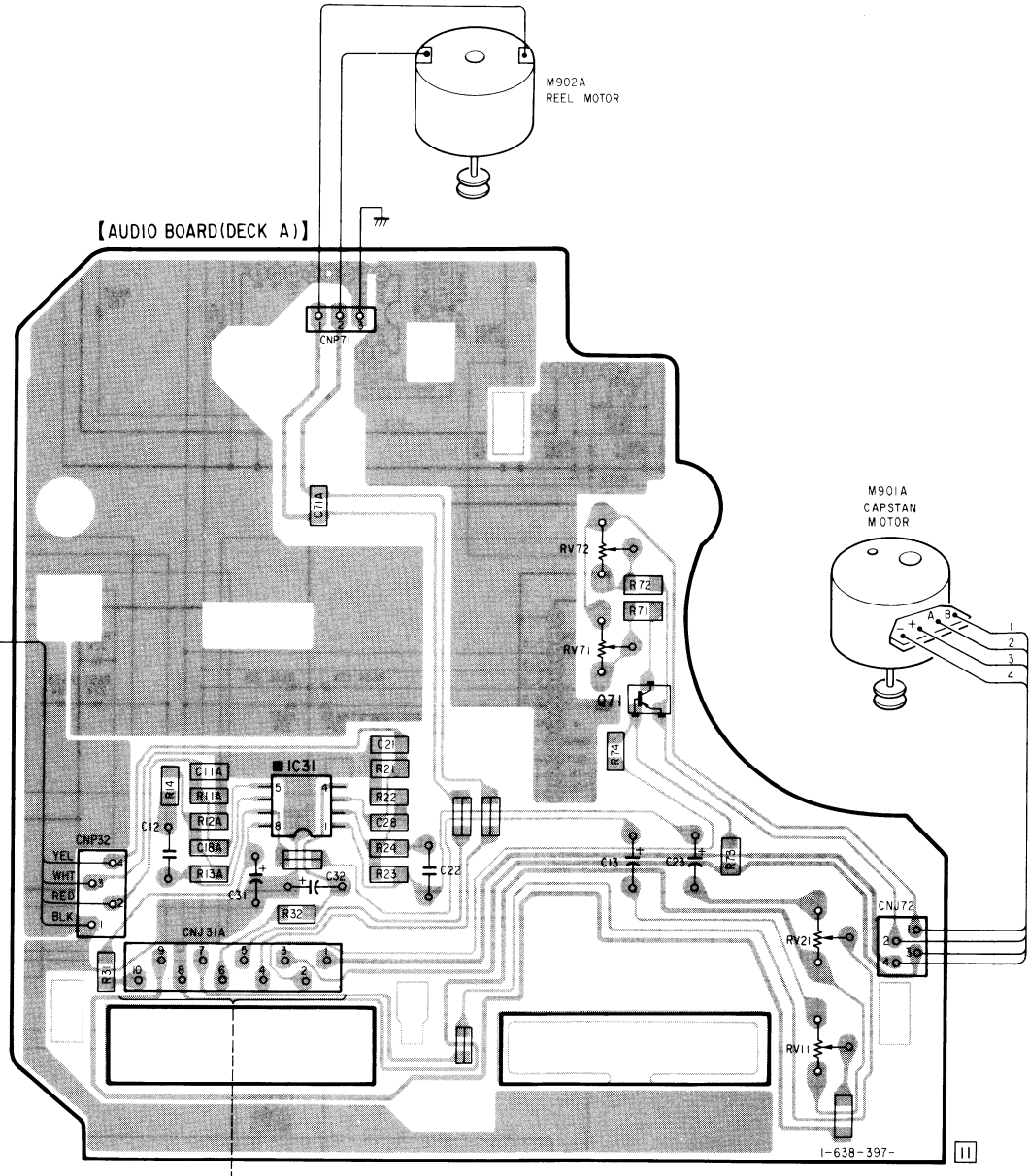
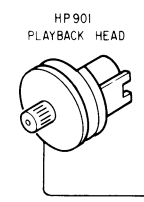
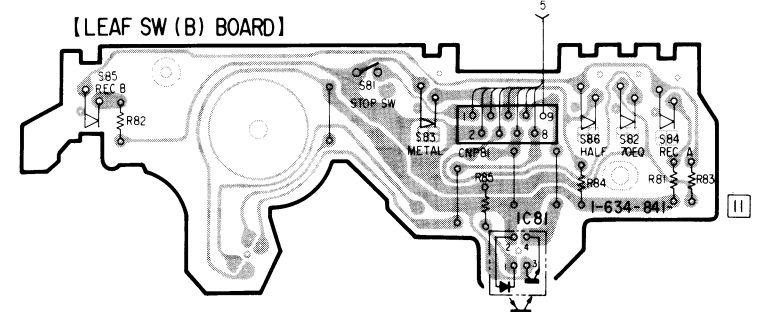
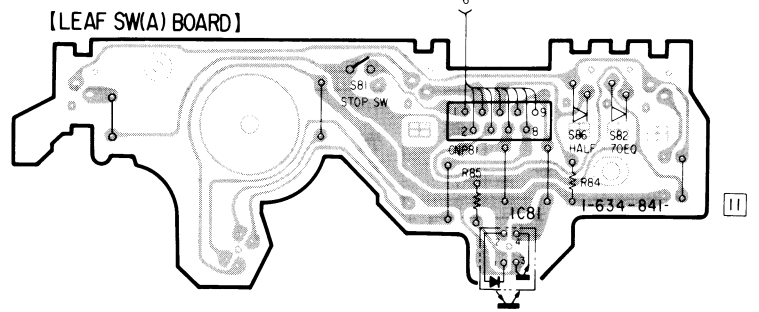
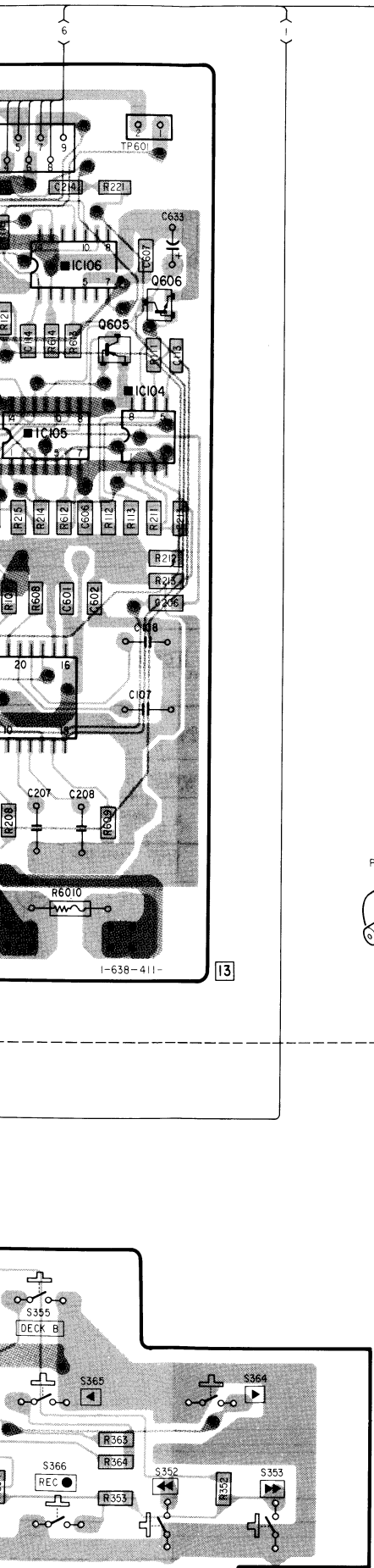
Note on Printed Wiring Boards :

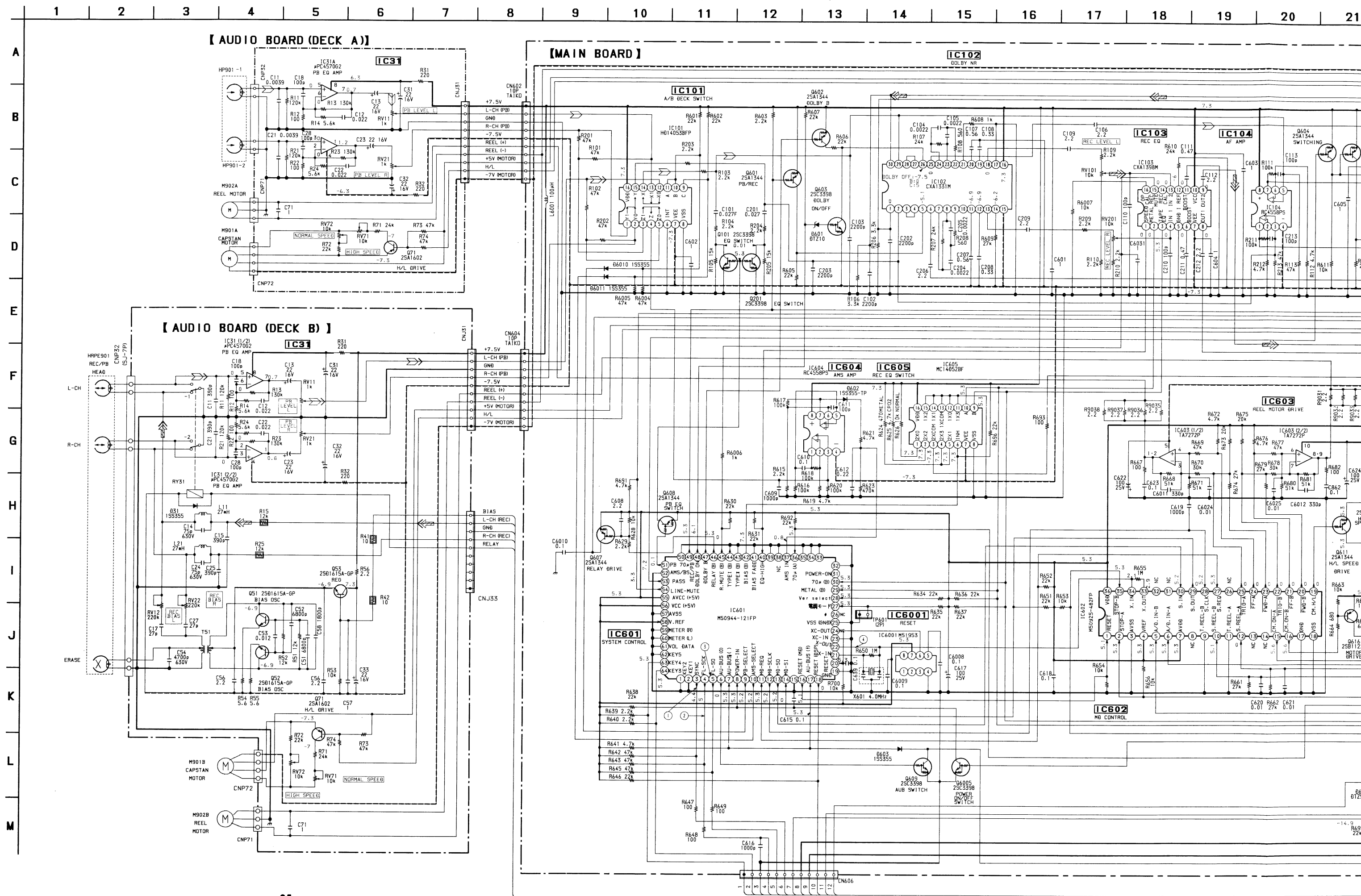
-  : parts extracted from the component side.
-  : parts mounted on the conductor side.
-  : Through hole.
-  : Pattern on the side which is seen.
-  : Pattern of the rear side.
-  : Chip components extracted from the rear side.



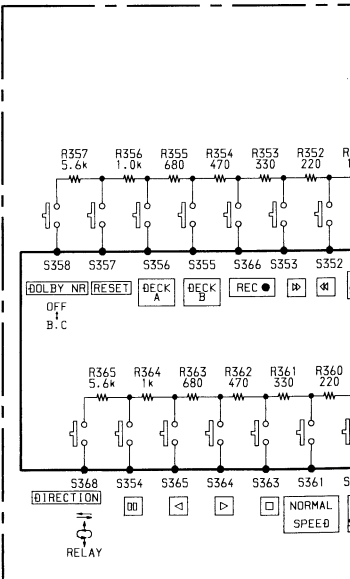
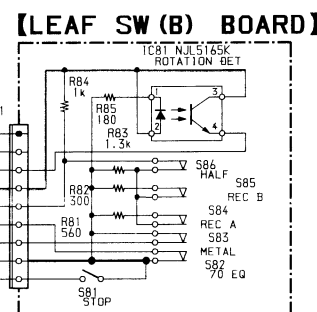
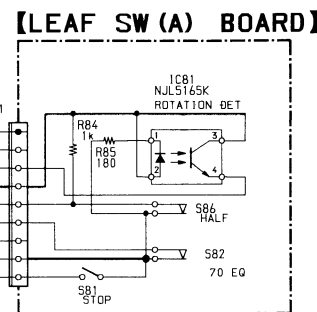
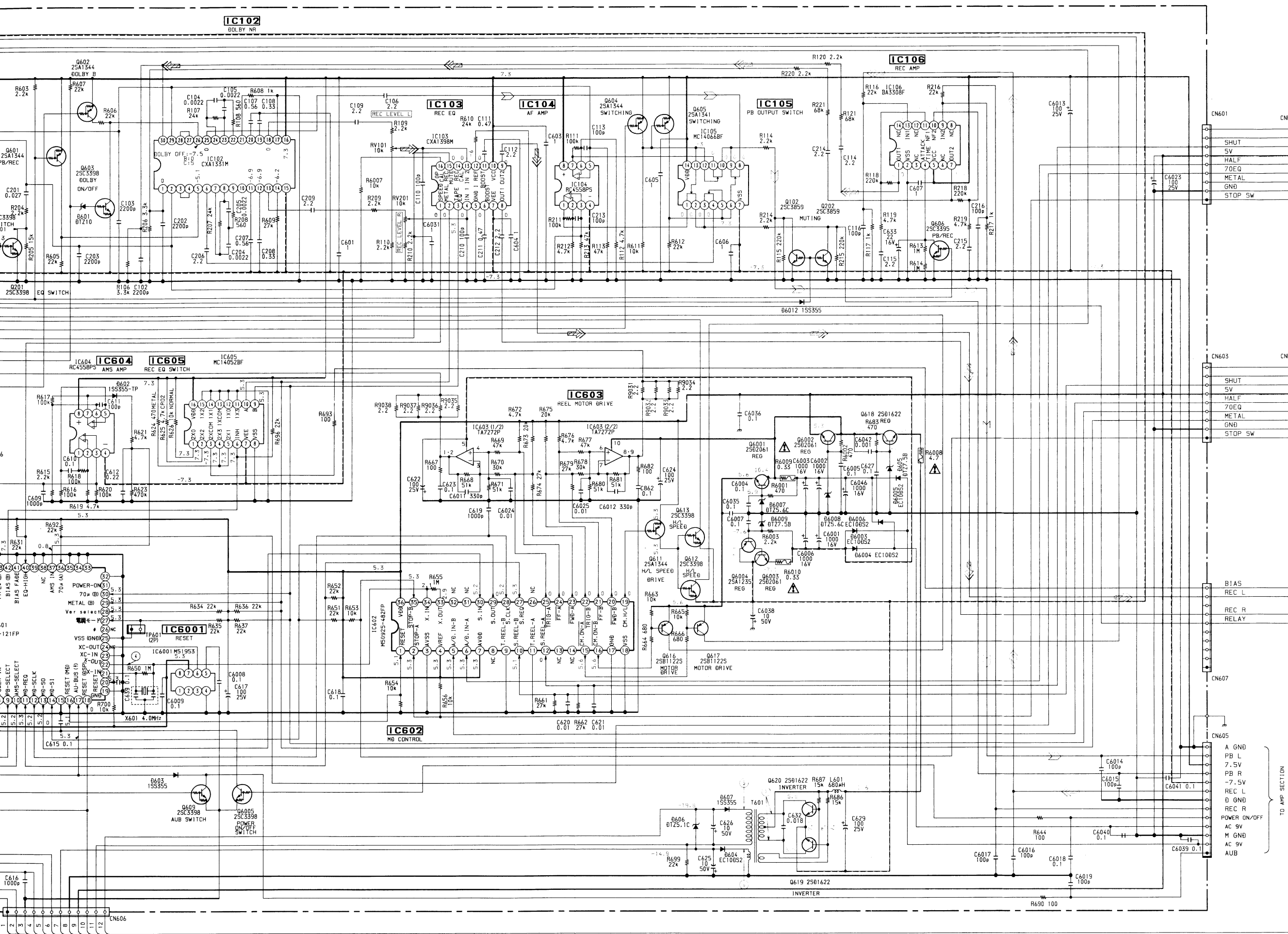






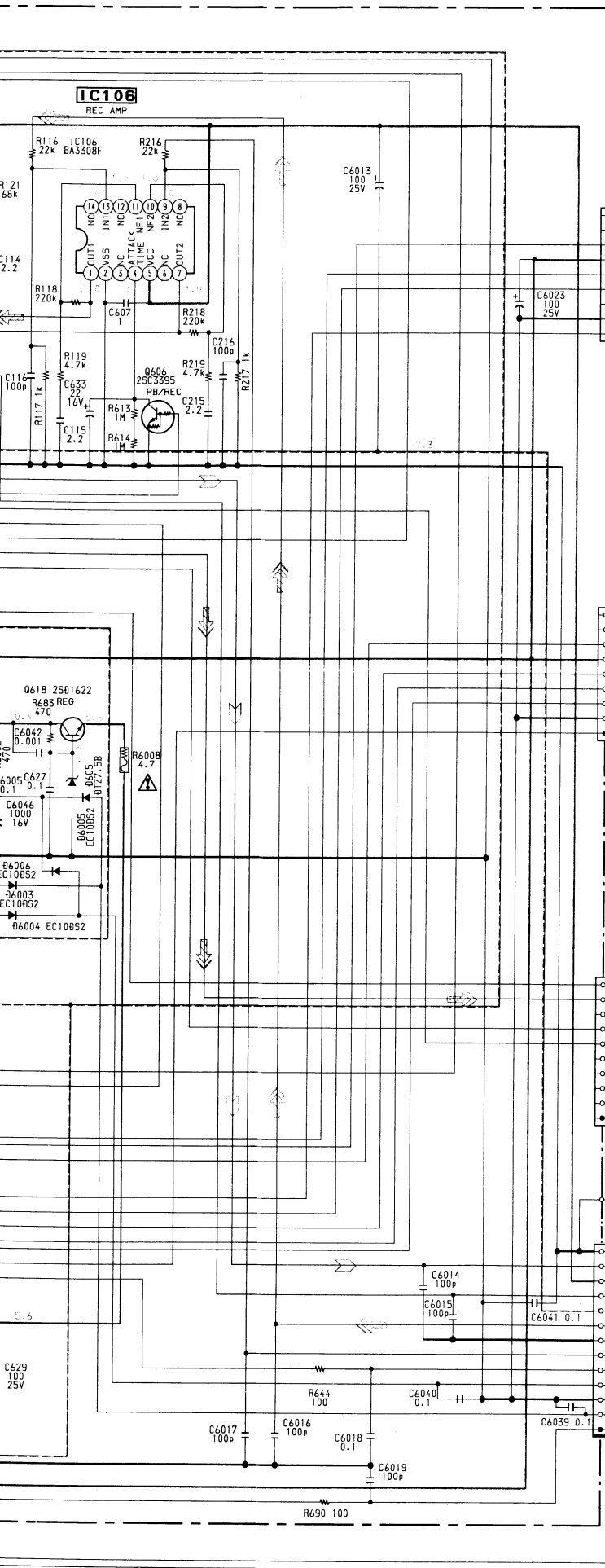




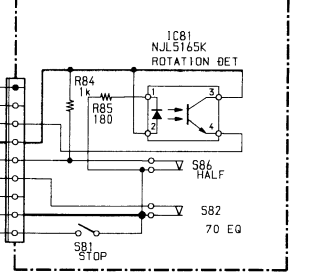


24 25 26 27 28 29 30 31 32 33 34 35 36 37 38 39 40 41 42

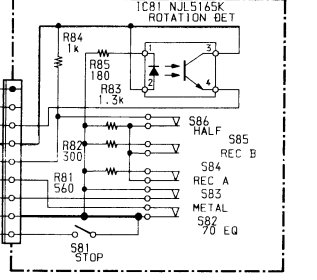
A  
B  
C  
D  
E  
F  
G  
H  
I  
J  
K  
L  
M



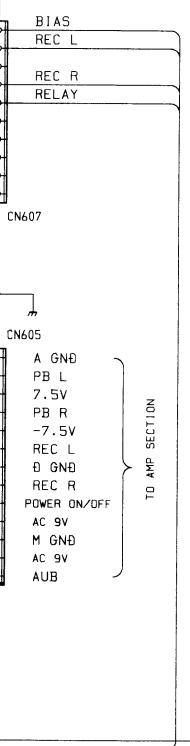
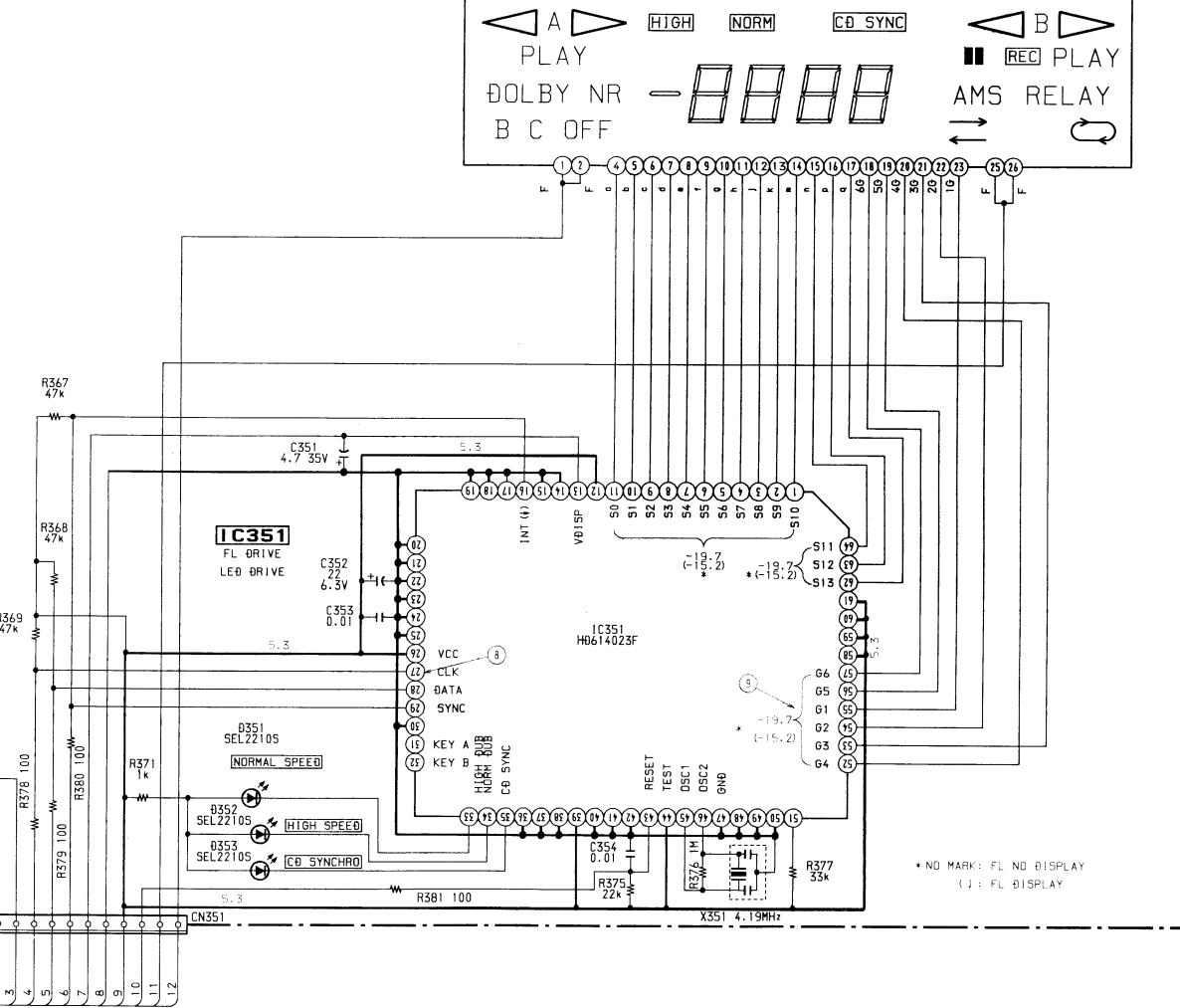
**[LEAF SW (A) BOARD]**



**[LEAF SW (B) BOARD]**

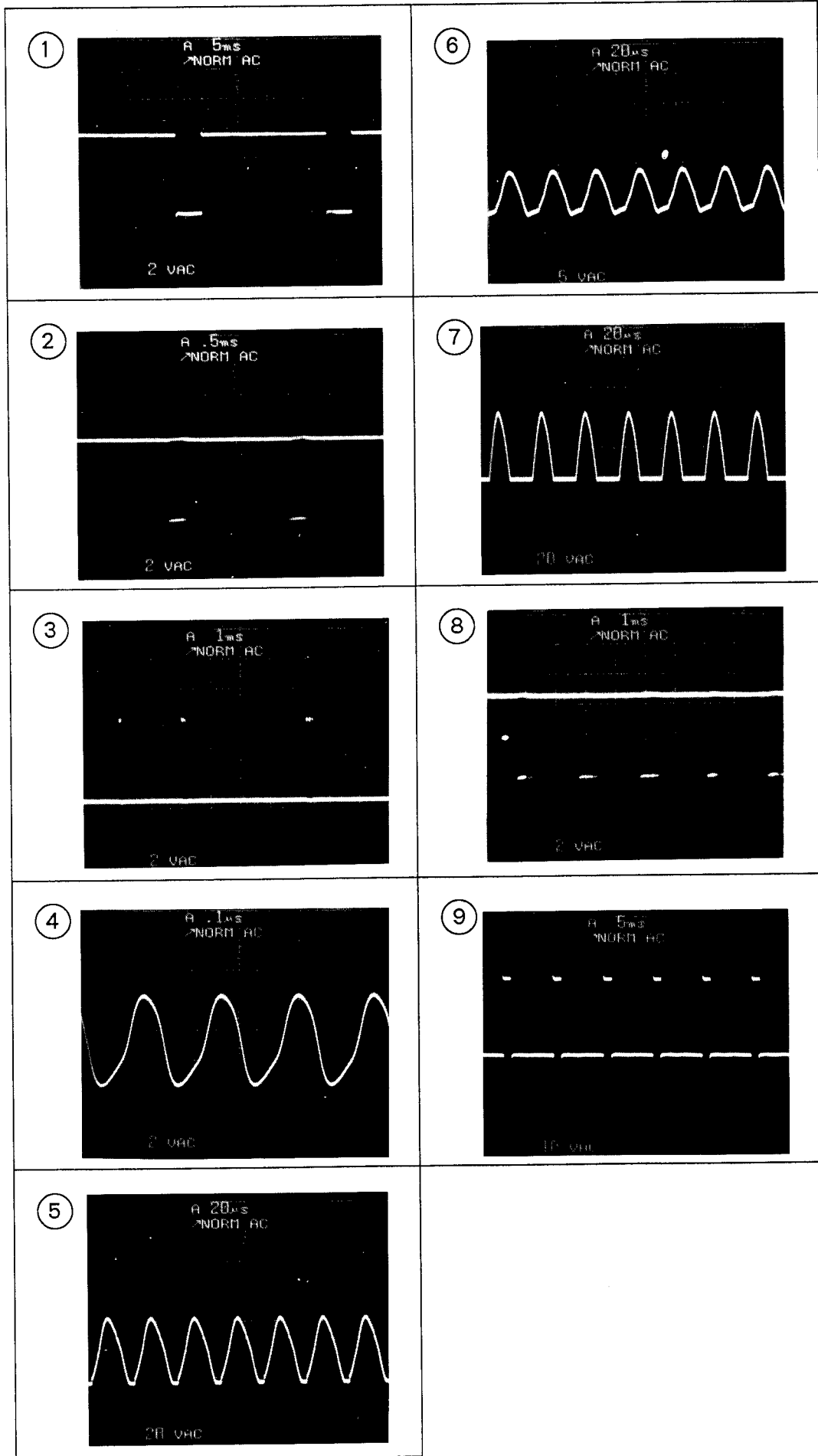


**[PANEL BOARD]**



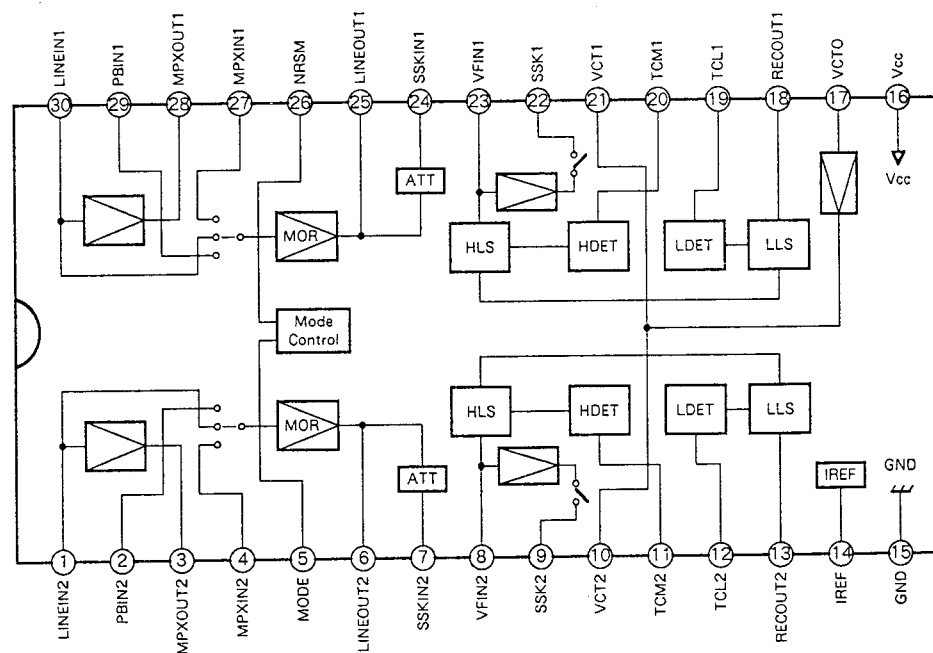
\* NO MARK: FL NO DISPLAY  
( ): FL DISPLAY

• WAVEFORMS

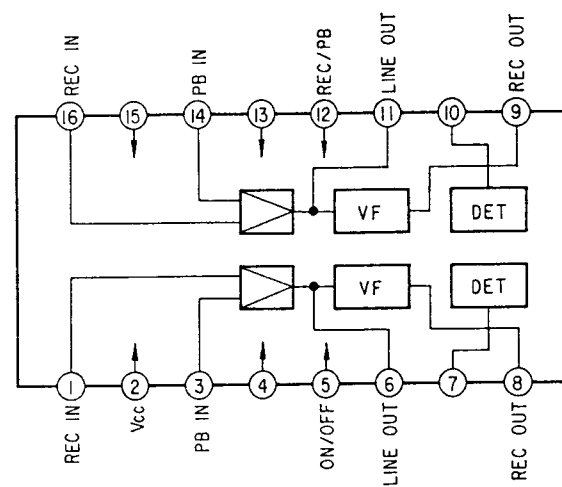


• IC BLOCK DIAGRAMS

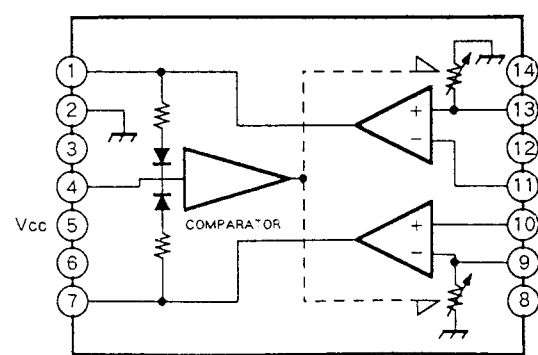
IC102 CXA1331M : AEP, UK, Germany, Australian Model



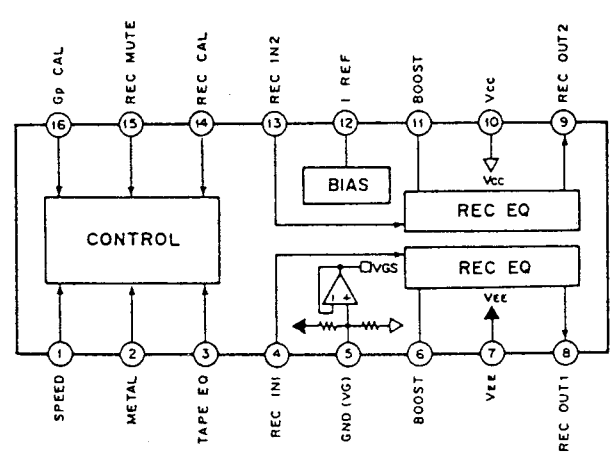
IC102 CXA1101M : US, Canadian, E Model



IC106 BA3308F



IC103 CXA1398M





# SECTION 5 EXPLODED VIEWS

**NOTE:**

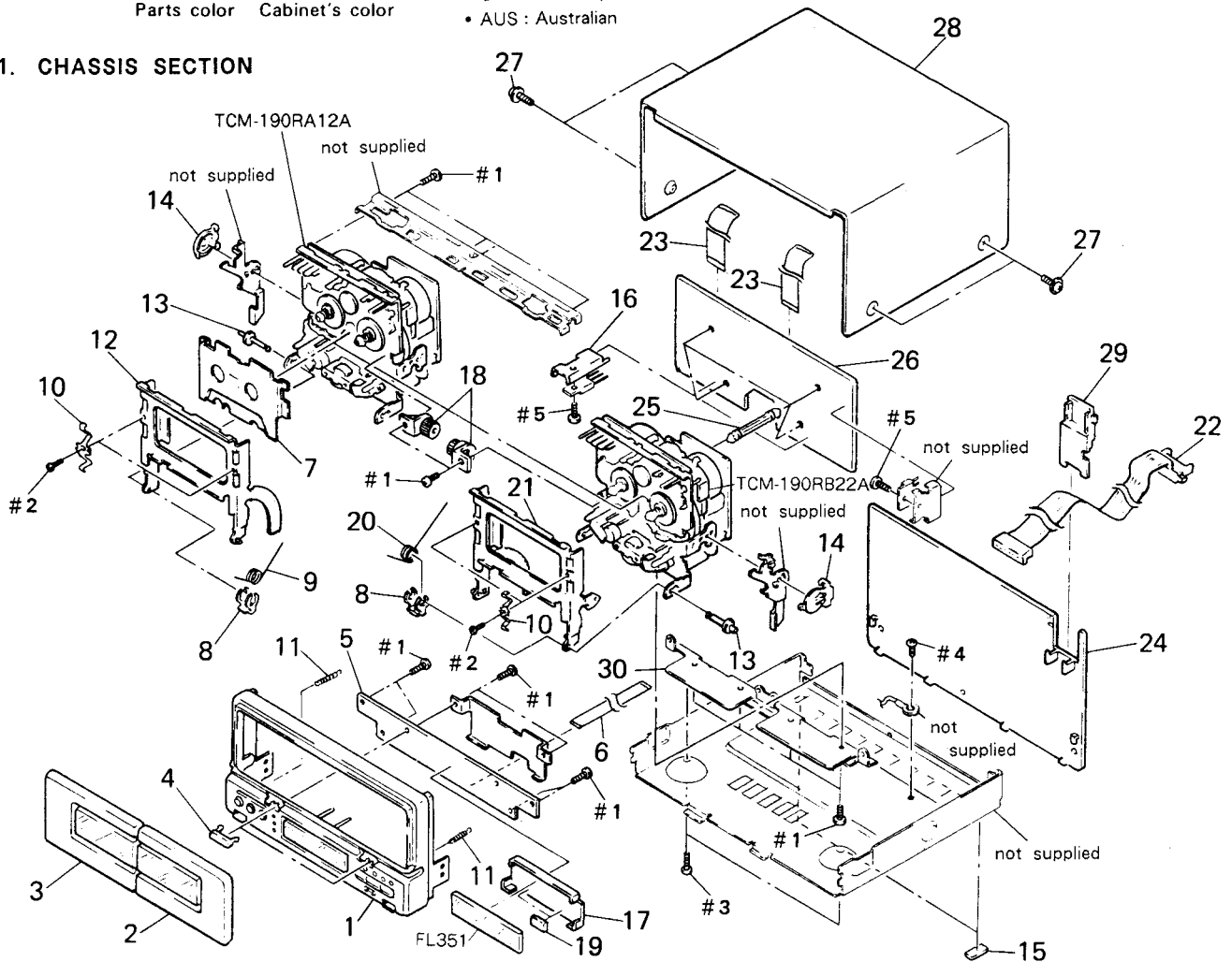
- -XX, -X mean standardized parts, so they may have some differences from the original one.
- The construction parts of an assembled part are indicated with a collation number in the remark column.
- Color indication of Appearance Parts  
Example:  
KNOB, BALANCE (WHITE)....(RED)

↑                    ↑  
Parts color    Cabinet's color

- Items marked "\*" are not stocked since they are seldom required for routine service. Some delay should be anticipated when ordering these items.
- The mechanical parts with no reference number in the exploded views are not supplied.
- Hardware (# mark) list is given in the last of this parts list.

- G : Germany
- AUS : Australian

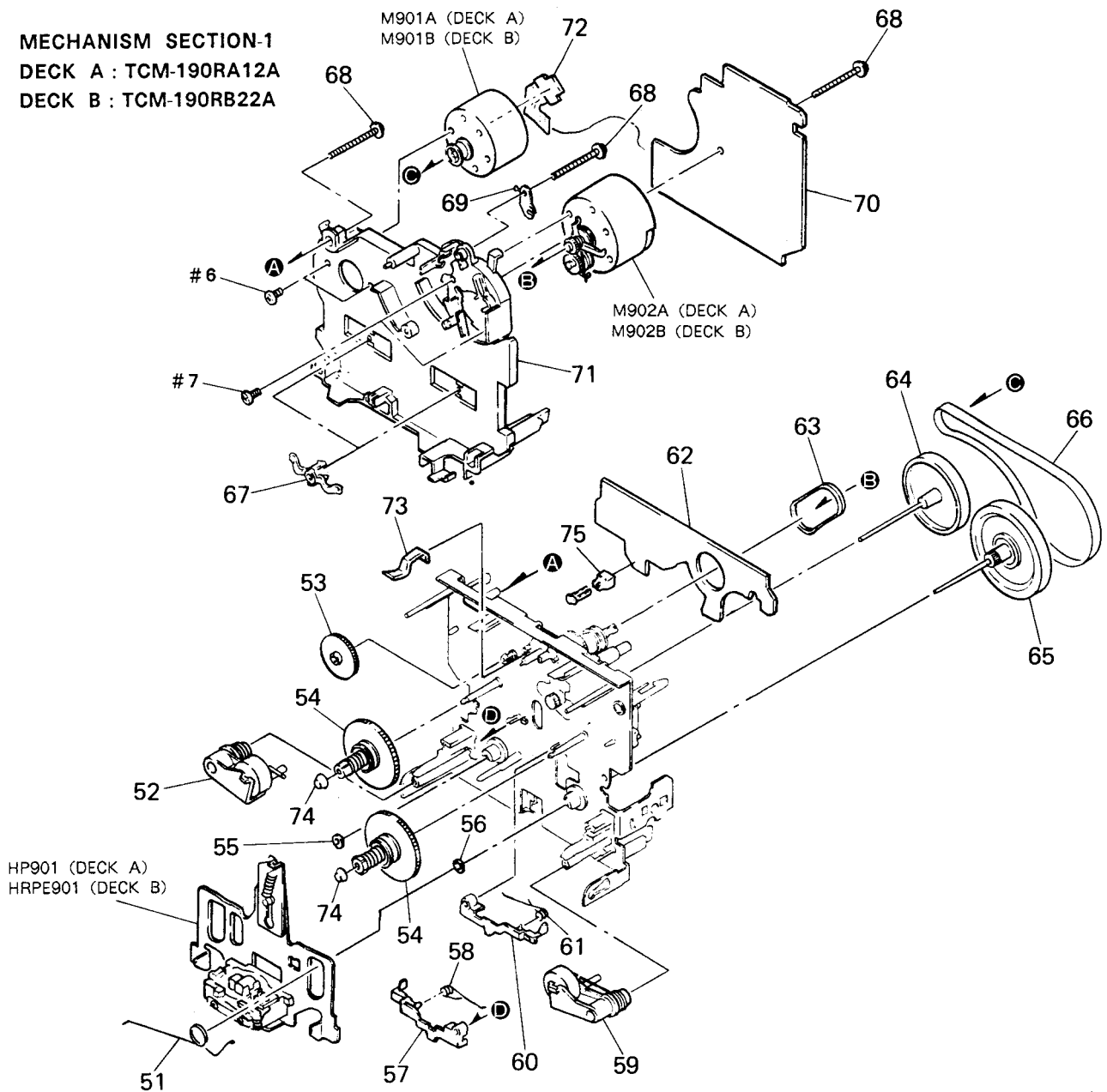
**5-1. CHASSIS SECTION**



Ref. No.	Part No.	Description	Remark
1	X-3362-860-1	PANEL ASSY, FRONT	
2	X-3362-859-1	LID (B) ASSY, CASSETTE (US, Canadian, E)	
2	X-4941-577-1	LID (B) ASSY, CASSETTE (AEP, UK, G, AUS)	
3	X-3362-858-1	LID (A) ASSY, CASSETTE	
4	3-367-718-01	COVER (AZIMUTH)	
5	* A-2006-424-A	PANEL BOARD, COMPLETE (AEP, UK, G, AUS)	
5	* A-2006-426-A	PANEL BOARD, COMPLETE (US, Canadian, E)	
6	1-590-904-11	WIRE, FLAT TYPE (12 CORE)	
7	3-367-711-01	RETAINER, CASSETTE	
8	3-367-720-01	RING (W), RETAINING	
9	3-354-959-01	SPRING (LOADING L), TORSION	
10	3-340-137-01	SPRING, CASSETTE RETAINER	
11	3-489-099-11	SPRING, TENSION	
12	X-3362-857-1	HOLDER (L) ASSY, CASSETTE	
13	3-367-721-01	SHAFT (FULCRUM SHAFT)	
14	3-354-957-01	JOINT (LOCK LEVER)	

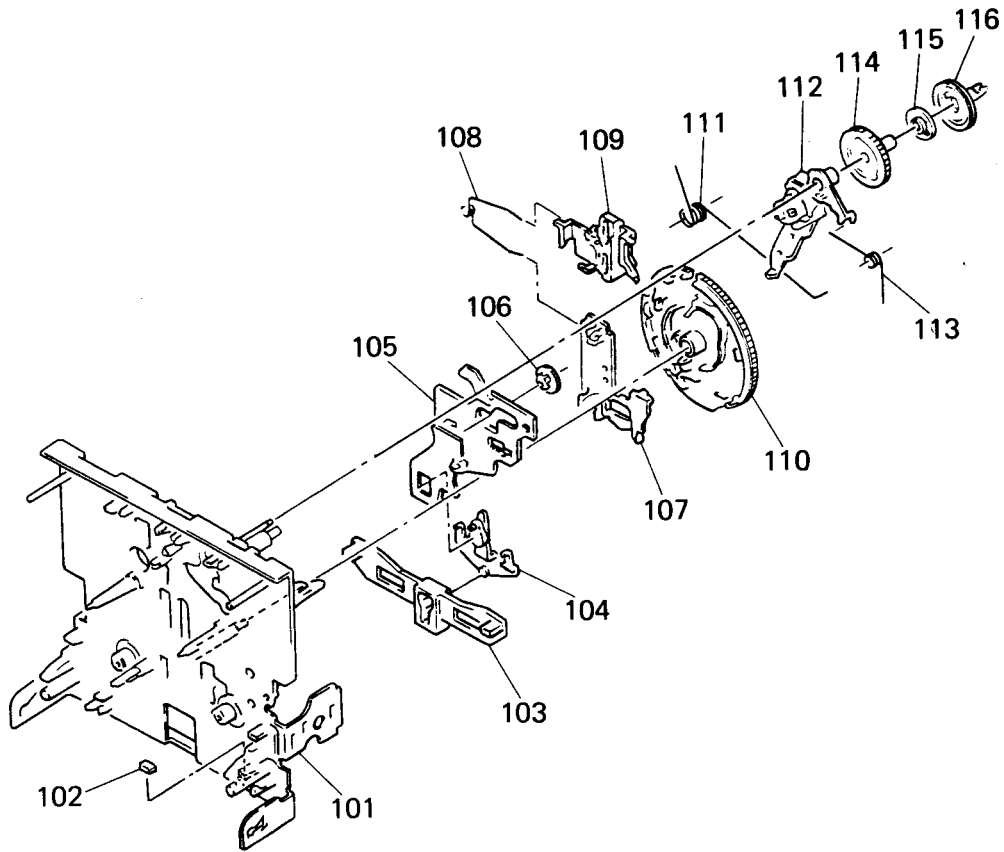
Ref. No.	Part No.	Description	Remark
15	4-930-336-01	FOOT (FELT)	
16	* 3-309-144-21	HEAT SINK	
17	* 3-367-839-01	HOLDER, FL TUBE	
18	3-354-963-01	DAMPER	
19	* 4-932-810-11	CUSHION (FL)	
20	3-354-960-01	SPRING (LOADING R), TORSION	
21	X-3362-856-1	HOLDER (R) ASSY, CASSETTE	
22	1-590-579-11	CORD (WITH CONNECTOR)	
23	1-590-902-11	WIRE, FLAT TYPE (9 CORE)	
24	* 3-367-730-01	PANEL, BACK	
25	* 3-682-419-21	HOLDER, P. C. B	
26	* A-2006-423-A	MAIN BOARD, COMPLETE (AEP, UK, G, AUS)	
26	* A-2006-425-A	MAIN BOARD, COMPLETE (US, Canadian, E)	
27	3-704-366-01	SCREW (CASE) (M3X8)	
28	* 4-944-213-01	CASE	
29	* 4-930-344-01	HOLDER (CONNECTION CORD)	
30	* 3-367-724-01	JOINT (LOWER)	
FL351	1-519-638-11	INDICATOR TUBE, FLUORESCENT	

5-2. MECHANISM SECTION-1  
 DECK A : TCM-190RA12A  
 DECK B : TCM-190RB22A



Ref. No.	Part No.	Description	Remark	Ref. No.	Part No.	Description	Remark
51	3-359-455-01	SPRING, TORSION		68	3-359-414-01	SCREW (+PTPWH 2X23)	
52	X-3359-409-1	LEVER (PINCH LEVER REV) ASSY		69	3-359-450-01	PLATE, GROUND	
53	3-359-424-01	GEAR (REV GEAR)		70	* A-2006-399-A	MOUNTED PCB (RA12A), AUDIO (DECK A)	
54	X-3359-404-1	TABLE ASSY, REEL		70	* A-2006-400-A	MOUNTED PCB (RB22A), AUDIO (DECK B)	
55	3-356-714-01	WASHER		71	* 3-359-436-01	BASE (THRUST RETAINER), FITTING	
56	3-356-713-01	WASHER		72	1-638-983-11	PC BOARD, MOTOR FLEXIBLE	
57	3-354-956-01	LEVER (EJ SAFTY LEVER R)		73	3-359-430-01	SPRING (CASSETTE RETAINER), LEAF	
58	3-354-962-01	SPRING (EJ SAFTY SPRING R)		74	3-362-308-01	CAP (REEL)	
59	X-3359-408-1	LEVER (PINCH LEVER FWD) ASSY		75	3-343-419-01	HOLDER (S SENSER A)	
60	3-354-955-01	LEVER (EJ SAFTY LEVER L)		HP901	A-2003-837-A	BASE ASSY, HEAD (DECK A)	
61	3-354-961-01	SPRING (EJ SAFTY SPRING L)		HRPE901	A-2003-838-A	BASE ASSY, HEAD (DECK B)	
62	* 1-634-841-11	LEAF SW (A), (B) BOARD		M901A	X-3359-417-1	MOTOR ASSY, CAPSTAN	
63	3-359-466-01	BELT (FR), SQUARE		M901B	X-3359-417-1	MOTOR ASSY, CAPSTAN	
64	X-3359-410-1	FLYWHEEL (REV) ASSY		M902A	X-3363-501-1	MOTOR ASSY, REEL	
65	X-3359-406-1	FLYWHEEL (FWD) COMPLETE ASSY		M902B	X-3363-501-1	MOTOR ASSY, REEL	
66	3-359-417-01	BELT (FLAT), CAPSTAN					
67	3-575-321-00	RETAINER, THRUST, CAPSTAN					

5-3. MECHANISM SECTION-2



Ref. No.	Part No.	Description	Remark	Ref. No.	Part No.	Description	Remark
101	X-3359-415-1	CHASSIS ASSY, MECHANICAL		109	3-359-429-01	SLIDER (BRAKE PLATE)	
102	3-359-469-01	SPACER		110	3-359-420-01	GEAR (CAM GEAR)	
103	* 3-359-425-01	SLIDER (REVERSE SLIDER)		111	3-359-456-01	SPRING (TRIGGER SPRING), TORSION	
104	3-359-426-01	LEVER (REVERSE LEVER)		112	X-3359-405-1	LEVER (FR ARM) ASSY	
105	* 3-359-415-01	SLIDER (TRIGGER SLIDER)		113	3-359-453-01	SPRING (FR ARM), TORSION	
106	3-359-448-01	GEAR (TRIGGER)		114	3-359-419-01	GEAR (FR GEAR)	
107	* 3-359-427-01	SLIDER (LEVERSE SLIDER)		115	3-359-421-01	CLUTCH (REEL DISK)	
108	3-359-454-01	SPRING, TORSION		116	3-359-418-01	PULLEY (FR PULLEY)	

# SECTION 6 ELECTRICAL PARTS LIST

LEAF SW(A)

LEAF SW(B)

MAIN

**NOTE:**

- Due to standardization, replacements in the parts list may be different from the parts specified in the diagrams or the components used on the set.
- -XX, -X mean standardized parts, so they may have some difference from the original one.
- RESISTORS  
All resistors are in ohms  
METAL: Metal-film resistor  
METAL OXIDE: Metal Oxide-film resistor  
F: nonflammable

- Items marked "\*" are not stocked since they are seldom required for routine service. Some delay should be anticipated when ordering these items.
- SEMICONDUCTORS  
In each case, u:  $\mu$ , for example:  
uA.....:  $\mu$ A....., uPA.....:  $\mu$ PA.....  
uPB.....:  $\mu$ PB....., uPC.....:  $\mu$ PC.....  
uPD.....:  $\mu$ PD.....
- CAPACITORS  
uF:  $\mu$ F
- COILS  
uH:  $\mu$ H

- G : Germany
- AUS: Australian

The components identified by mark  $\Delta$  or dotted line with mark  $\Delta$  are critical for safety. Replace only with part number specified.

Les composants identifiés par une marque  $\Delta$  sont critiques pour la sécurité. Ne les remplacer que par une pièce portant le numéro spécifié.

When indicating parts by reference number, please include the board name.

Ref.No.	Part No.	Description	Remark
	* 1-634-841-11	LEAF SW (A) BOARD *****	
	3-343-419-01	HOLDER (S SENSER A)  < CONNECTOR >	
CNP81	* 1-568-852-11	SOCKET, CONNECTOR 9P  < IC >	
IC81	8-719-710-03	IC PHOTO REFLECTOR NJL5165K-B  < RESISTOR >	
R84	1-249-417-11	CARBON 1K 5% 1/4W	
R85	1-249-408-11	CARBON 180 5% 1/4W  < SWITCH >	
S81	1-571-958-11	SWITCH, PUSH (1 KEY) (STOP)	
S82	1-571-281-21	SWITCH, LEAF (70EQ)	
S86	1-571-281-21	SWITCH, LEAF (HALF)	
*****			
	* 1-634-841-11	LEAF SW (B) BOARD *****	
	3-343-419-01	HOLDER (S SENSER A)  < CONNECTOR >	
CNP81	* 1-568-852-11	SOCKET, CONNECTOR 9P  < IC >	
IC81	8-719-710-03	IC PHOTO REFLECTOR NJL5165K-B	

Ref.No.	Part No.	Description	Remark
< RESISTOR >			
R81	1-249-414-11	CARBON 560 5% 1/4W	
R82	1-247-818-11	CARBON 300 5% 1/4W	
R83	1-247-834-11	CARBON 1.3K 5% 1/4W	
R84	1-249-417-11	CARBON 1K 5% 1/4W	
R85	1-249-408-11	CARBON 180 5% 1/4W  < SWITCH >	
S81	1-571-958-11	SWITCH, PUSH (1 KEY) (STOP)	
S82	1-571-281-21	SWITCH, LEAF (70EQ)	
S83	1-571-281-21	SWITCH, LEAF (METAL)	
S84	1-571-281-21	SWITCH, LEAF (REC A)	
S85	1-571-281-21	SWITCH, LEAF (REC B)	
S86	1-571-281-21	SWITCH, LEAF (HALF)	
*****			
	* A-2006-423-A	MAIN BOARD, COMPLETE (AEP, UK, G, AUS)	
	* A-2006-425-A	MAIN BOARD, COMPLETE (US, Canadian, E) *****	
	* 3-309-144-21	HEAT SINK  < CAPACITOR >	
C101	1-136-158-00	FILM 0.027uF 5% 50V	
C102	1-163-013-11	CERAMIC CHIP 0.0022uF 10% 25V (US, Canadian, E)	
C102	1-164-161-11	CERAMIC CHIP 0.0022uF 10% 100V (AEP, UK, G, AUS)	
C103	1-163-013-11	CERAMIC CHIP 0.0022uF 10% 25V (US, Canadian, E)	
C103	1-164-161-11	CERAMIC CHIP 0.0022uF 10% 100V (AEP, UK, G, AUS)	

MAIN

Ref. No.	Part No.	Description	Remark
C104	1-130-475-00	MYLAR 0.0022uF 5% 50V (AEP, UK, G, AUS)	
C105	1-130-475-00	MYLAR 0.0022uF 5% 50V (AEP, UK, G, AUS)	
C106	1-164-505-11	CERAMIC CHIP 2.2uF 16V	
C107	1-124-254-00	ELECT 0.68uF 20% 50V (US, Canadian, E)	
C107	1-136-174-00	FILM 0.56uF 5% 50V (AEP, UK, G, AUS)	
C108	1-136-171-00	FILM 0.33uF 5% 50V (AEP, UK, G, AUS)	
C109	1-164-505-11	CERAMIC CHIP 2.2uF 16V	
C110	1-163-117-00	CERAMIC CHIP 100PF 5% 50V	
C111	1-164-005-11	CERAMIC CHIP 0.47uF 25V	
C112	1-164-505-11	CERAMIC CHIP 2.2uF 16V	
C113	1-163-117-00	CERAMIC CHIP 100PF 5% 50V	
C114	1-164-505-11	CERAMIC CHIP 2.2uF 16V	
C115	1-164-505-11	CERAMIC CHIP 2.2uF 16V	
C116	1-163-117-00	CERAMIC CHIP 100PF 5% 50V	
C201	1-136-158-00	FILM 0.027uF 5% 50V	
C202	1-163-013-11	CERAMIC CHIP 0.0022uF 10% 25V (US, Canadian, E)	
C202	1-164-161-11	CERAMIC CHIP 0.0022uF 10% 100V (AEP, UK, G, AUS)	
C203	1-163-013-11	CERAMIC CHIP 0.0022uF 10% 25V (US, Canadian, E)	
C203	1-164-161-11	CERAMIC CHIP 0.0022uF 10% 100V (AEP, UK, G, AUS)	
C204	1-130-475-00	MYLAR 0.0022uF 5% 50V (AEP, UK, G, AUS)	
C205	1-130-475-00	MYLAR 0.0022uF 5% 50V (AEP, UK, G, AUS)	
C206	1-164-505-11	CERAMIC CHIP 2.2uF 16V	
C207	1-124-254-00	ELECT 0.68uF 20% 50V (US, Canadian, E)	
C207	1-136-174-00	FILM 0.56uF 5% 50V (AEP, UK, G, AUS)	
C208	1-136-171-00	FILM 0.33uF 5% 50V (AEP, UK, G, AUS)	
C209	1-164-505-11	CERAMIC CHIP 2.2uF 16V	
C210	1-163-117-00	CERAMIC CHIP 100PF 5% 50V	
C211	1-164-005-11	CERAMIC CHIP 0.47uF 25V	
C212	1-164-505-11	CERAMIC CHIP 2.2uF 16V	
C213	1-163-117-00	CERAMIC CHIP 100PF 5% 50V	
C214	1-164-505-11	CERAMIC CHIP 2.2uF 16V	
C215	1-164-505-11	CERAMIC CHIP 2.2uF 16V	
C216	1-163-117-00	CERAMIC CHIP 100PF 5% 50V	

Ref. No.	Part No.	Description	Remark
C601	1-164-346-11	CERAMIC CHIP 1uF 16V	
C602	1-164-346-11	CERAMIC CHIP 1uF 16V	
C603	1-164-346-11	CERAMIC CHIP 1uF 16V	
C604	1-164-346-11	CERAMIC CHIP 1uF 16V	
C605	1-164-346-11	CERAMIC CHIP 1uF 16V	
C606	1-164-346-11	CERAMIC CHIP 1uF 16V	
C607	1-164-346-11	CERAMIC CHIP 1uF 16V	
C608	1-164-505-11	CERAMIC CHIP 2.2uF 16V	
C609	1-163-141-00	CERAMIC CHIP 0.001uF 5% 50V	
C610	1-163-038-00	CERAMIC CHIP 0.1uF 25V	
C611	1-163-117-00	CERAMIC CHIP 100PF 5% 50V	
C612	1-164-222-11	CERAMIC CHIP 0.22uF 25V	
C615	1-163-038-00	CERAMIC CHIP 0.1uF 25V	
C616	1-163-141-00	CERAMIC CHIP 0.001uF 5% 50V	
C617	1-124-478-11	ELECT 100uF 20% 25V	
C618	1-163-038-00	CERAMIC CHIP 0.1uF 25V	
C619	1-163-141-00	CERAMIC CHIP 0.001uF 5% 50V	
C620	1-164-232-11	CERAMIC CHIP 0.01uF 50V	
C621	1-164-232-11	CERAMIC CHIP 0.01uF 50V	
C622	1-124-478-11	ELECT 100uF 20% 25V	
C623	1-163-038-00	CERAMIC CHIP 0.1uF 25V	
C624	1-124-478-11	ELECT 100uF 20% 25V	
C625	1-124-907-11	ELECT 10uF 20% 50V	
C626	1-124-907-11	ELECT 10uF 20% 50V	
C627	1-163-038-00	CERAMIC CHIP 0.1uF 25V	
C629	1-124-478-11	ELECT 100uF 20% 25V	
C632	1-136-594-11	FILM 0.018uF 5% 100V	
C633	1-124-234-00	ELECT 22uF 20% 16V	
C639	1-163-038-00	CERAMIC CHIP 0.1uF 25V	
C862	1-163-038-00	CERAMIC CHIP 0.1uF 25V	
C6001	1-124-360-00	ELECT 1000uF 20% 16V	
C6002	1-124-360-00	ELECT 1000uF 20% 16V	
C6003	1-124-360-00	ELECT 1000uF 20% 16V	
C6004	1-163-038-00	CERAMIC CHIP 0.1uF 25V	
C6005	1-163-038-00	CERAMIC CHIP 0.1uF 25V	
C6006	1-124-360-00	ELECT 1000uF 20% 16V	
C6007	1-163-038-00	CERAMIC CHIP 0.1uF 25V	
C6008	1-163-038-00	CERAMIC CHIP 0.1uF 25V	
C6009	1-163-038-00	CERAMIC CHIP 0.1uF 25V	
C6010	1-163-038-00	CERAMIC CHIP 0.1uF 25V	
C6011	1-163-129-00	CERAMIC CHIP 330PF 5% 50V	
C6012	1-163-129-00	CERAMIC CHIP 330PF 5% 50V	
C6013	1-124-478-11	ELECT 100uF 20% 25V	
C6014	1-163-117-00	CERAMIC CHIP 100PF 5% 50V	
C6015	1-163-117-00	CERAMIC CHIP 100PF 5% 50V	
C6016	1-163-117-00	CERAMIC CHIP 100PF 5% 50V	
C6017	1-163-117-00	CERAMIC CHIP 100PF 5% 50V	
C6018	1-163-038-00	CERAMIC CHIP 0.1uF 25V	
C6019	1-163-117-00	CERAMIC CHIP 100PF 5% 50V	

Ref. No.	Part No.	Description	Remark
C6023	1-123-332-00	ELECT 47uF 20% 16V	(US, Canadian, E)
C6023	1-124-478-11	ELECT 100uF 20% 25V	(AEP, UK, G, AUS)
C6024	1-124-478-11	ELECT 100uF 20% 25V	(US, Canadian, E)
C6024	1-164-232-11	CERAMIC CHIP 0.01uF 50V	(AEP, UK, G, AUS)
C6025	1-124-478-11	ELECT 100uF 20% 25V	(US, Canadian, E)
C6025	1-164-232-11	CERAMIC CHIP 0.01uF 50V	(AEP, UK, G, AUS)
C6031	1-164-346-11	CERAMIC CHIP 1uF 16V	
C6035	1-163-038-00	CERAMIC CHIP 0.1uF 25V	
C6036	1-163-038-00	CERAMIC CHIP 0.1uF 25V	
C6038	1-124-907-11	ELECT 10uF 20% 50V	
C6039	1-163-038-00	CERAMIC CHIP 0.1uF 25V	
C6040	1-163-038-00	CERAMIC CHIP 0.1uF 25V	
C6041	1-163-038-00	CERAMIC CHIP 0.1uF 25V	
C6042	1-163-141-00	CERAMIC CHIP 0.001uF 5% 50V	(AEP, UK, G, AUS)
C6042	1-164-232-11	CERAMIC CHIP 0.01uF 50V	(US, Canadian, E)
C6043	1-164-232-11	CERAMIC CHIP 0.01uF 50V	(US, Canadian, E)
C6044	1-163-141-00	CERAMIC CHIP 0.001uF 5% 50V	(US, Canadian, E)
C6046	1-124-360-00	ELECT 1000uF 20% 16V	
< CONNECTOR >			
CN602	1-580-783-11	CONNECTOR, BOARD TO BOARD	
CN604	1-580-783-11	CONNECTOR, BOARD TO BOARD	
CN606	1-568-795-11	SOCKET, CONNECTOR 12P	
CN607	1-580-783-11	CONNECTOR, BOARD TO BOARD	
< DIODE >			
D601	8-719-977-26	DIODE DTZ10 (AEP, UK, G, AUS)	
D602	8-719-988-62	DIODE 1SS355	
D603	8-719-988-62	DIODE 1SS355	
D604	8-719-210-33	DIODE EC10DS2	
D605	8-719-977-16	DIODE DTZ7.5B	
D606	8-719-977-00	DIODE DTZ5.1C	
D607	8-719-988-62	DIODE 1SS355	
D6001	8-719-977-26	DIODE DTZ101 (US, Canadian, E)	
D6002	8-719-977-26	DIODE DTZ101 (US, Canadian, E)	
D6003	8-719-210-33	DIODE EC10DS2	
D6004	8-719-210-33	DIODE EC10DS2	

Ref. No.	Part No.	Description	Remark
D6005	8-719-210-33	DIODE EC10DS2	
D6006	8-719-210-33	DIODE EC10DS2	
D6007	8-719-977-04	DIODE DTZ5.6C	
D6008	8-719-977-04	DIODE DTZ5.6C	
D6009	8-719-977-16	DIODE DTZ7.5B	
D6010	8-719-988-62	DIODE 1SS355	
D6011	8-719-988-62	DIODE 1SS355	
D6012	8-719-988-62	DIODE 1SS355	
< IC >			
IC101	8-759-300-71	IC HD14053BFP	
IC102	8-752-037-90	IC CXA1331M (AEP, UK, G, AUS)	
IC102	8-752-050-13	IC CXA1101M (US, Canadian, E)	
IC103	8-752-056-00	IC CXA1398M	
IC104	8-759-981-95	IC RC4558-S	
IC105	8-759-516-47	IC CD4066BCM	
IC106	8-759-998-71	IC BA3308F	
IC601	8-759-636-37	IC M50944-121FP	
IC602	8-759-636-67	IC M50925-482FP	
IC603	8-759-207-05	IC TA7272P	
IC604	8-759-981-95	IC RC4558-S	
IC605	8-759-516-41	IC CD4052BCM (US, Canadian, E)	
IC605	8-759-009-06	IC MC14052BF (AEP, UK, G, AUS)	
IC6001	8-759-634-43	IC M51953BFP	
< COIL >			
L601	1-410-761-11	INDUCTOR 0.68mH	
L6001	1-410-482-31	INDUCTOR 100uH	
< TRANSISTOR >			
Q101	8-729-805-41	TRANSISTOR 2SC3398	
Q102	8-729-805-42	TRANSISTOR 2SC3859	
Q201	8-729-805-41	TRANSISTOR 2SC3398	
Q202	8-729-805-42	TRANSISTOR 2SC3859	
Q601	8-729-805-65	TRANSISTOR 2SA1344 (AEP, UK, G, AUS)	
Q602	8-729-805-65	TRANSISTOR 2SA1344 (AEP, UK, G, AUS)	
Q603	8-729-805-41	TRANSISTOR 2SC3398 (AEP, UK, G, AUS)	
Q604	8-729-805-65	TRANSISTOR 2SA1344	
Q605	8-729-805-69	TRANSISTOR 2SA1341	
Q606	8-729-805-45	TRANSISTOR 2SC3395	
Q607	8-729-805-65	TRANSISTOR 2SA1344	
Q608	8-729-805-65	TRANSISTOR 2SA1344	

MAIN

Ref. No.	Part No.	Description	Remark	Ref. No.	Part No.	Description	Remark
Q609	8-729-805-41	TRANSISTOR 2SC3398		R208	1-216-043-00	METAL CHIP	560 5% 1/10W (AEP, UK, G, AUS)
Q611	8-729-805-65	TRANSISTOR 2SA1344		R209	1-216-057-00	METAL CHIP	2.2K 5% 1/10W
Q612	8-729-805-41	TRANSISTOR 2SC3398		R210	1-216-057-00	METAL CHIP	2.2K 5% 1/10W
Q613	8-729-805-41	TRANSISTOR 2SC3398		R211	1-216-097-00	METAL CHIP	100K 5% 1/10W
Q616	8-729-820-86	TRANSISTOR 2SB1121-ST		R212	1-216-065-00	METAL CHIP	4.7K 5% 1/10W
Q617	8-729-820-86	TRANSISTOR 2SB1121-ST		R213	1-216-089-00	METAL CHIP	47K 5% 1/10W
Q618	8-729-808-01	TRANSISTOR 2SD1622-S		R214	1-216-057-00	METAL CHIP	2.2K 5% 1/10W
Q619	8-729-808-01	TRANSISTOR 2SD1622-S		R215	1-216-105-00	METAL CHIP	220K 5% 1/10W
Q620	8-729-808-01	TRANSISTOR 2SD1622-S		R216	1-216-081-00	METAL CHIP	22K 5% 1/10W
Q6001	8-729-111-55	TRANSISTOR 2SD1312-K		R217	1-216-049-00	METAL CHIP	1K 5% 1/10W
Q6002	8-729-111-55	TRANSISTOR 2SD1312-K		R218	1-216-105-00	METAL CHIP	220K 5% 1/10W
Q6003	8-729-111-55	TRANSISTOR 2SD1312-K		R219	1-216-065-00	METAL CHIP	4.7K 5% 1/10W
Q6004	8-729-600-22	TRANSISTOR 2SA1235-F		R220	1-216-057-00	METAL CHIP	2.2K 5% 1/10W
Q6005	8-729-805-41	TRANSISTOR 2SC3398		R221	1-216-093-00	METAL CHIP	68K 5% 1/10W
< RESISTOR >				R601	1-216-081-00	METAL CHIP	22K 5% 1/10W
R101	1-216-089-00	METAL CHIP	47K 5% 1/10W	R602	1-216-081-00	METAL CHIP	22K 5% 1/10W
R102	1-216-089-00	METAL CHIP	47K 5% 1/10W	R603	1-216-057-00	METAL CHIP	2.2K 5% 1/10W (AEP, UK, G, AUS)
R103	1-216-057-00	METAL CHIP	2.2K 5% 1/10W	R603	1-216-073-00	METAL CHIP	10K 5% 1/10W (US, Canadian, E)
R104	1-216-057-00	METAL CHIP	2.2K 5% 1/10W	R605	1-216-081-00	METAL CHIP	22K 5% 1/10W (AEP, UK, G, AUS)
R105	1-216-077-00	METAL CHIP	15K 5% 1/10W	R605	1-216-089-00	METAL CHIP	47K 5% 1/10W (US, Canadian, E)
R106	1-216-061-00	METAL CHIP	3.3K 5% 1/10W	R606	1-216-081-00	METAL CHIP	22K 5% 1/10W (AEP, UK, G, AUS)
R107	1-216-082-00	METAL GLAZE	24K 5% 1/10W (AEP, UK, G, AUS)	R606	1-216-089-00	METAL CHIP	47K 5% 1/10W (US, Canadian, E)
R108	1-216-043-00	METAL CHIP	560 5% 1/10W (AEP, UK, G, AUS)	R607	1-216-073-00	METAL CHIP	10K 5% 1/10W (US, Canadian, E)
R109	1-216-057-00	METAL CHIP	2.2K 5% 1/10W	R607	1-216-081-00	METAL CHIP	22K 5% 1/10W (AEP, UK, G, AUS)
R110	1-216-057-00	METAL CHIP	2.2K 5% 1/10W	R608	1-216-049-00	METAL CHIP	1K 5% 1/10W (AEP, UK, G, AUS)
R111	1-216-097-00	METAL CHIP	100K 5% 1/10W	R608	1-216-088-00	METAL CHIP	43K 5% 1/10W (US, Canadian, E)
R112	1-216-065-00	METAL CHIP	4.7K 5% 1/10W	R609	1-216-083-00	METAL CHIP	27K 5% 1/10W (AEP, UK, G, AUS)
R113	1-216-089-00	METAL CHIP	47K 5% 1/10W	R611	1-216-073-00	METAL CHIP	10K 5% 1/10W
R114	1-216-057-00	METAL CHIP	2.2K 5% 1/10W	R612	1-216-081-00	METAL CHIP	22K 5% 1/10W
R115	1-216-105-00	METAL CHIP	220K 5% 1/10W	R613	1-216-121-00	METAL CHIP	1M 5% 1/10W
R116	1-216-081-00	METAL CHIP	22K 5% 1/10W	R614	1-216-121-00	METAL CHIP	1M 5% 1/10W
R117	1-216-049-00	METAL CHIP	1K 5% 1/10W	R615	1-216-057-00	METAL CHIP	2.2K 5% 1/10W
R118	1-216-105-00	METAL CHIP	220K 5% 1/10W	R616	1-216-097-00	METAL CHIP	100K 5% 1/10W
R119	1-216-065-00	METAL CHIP	4.7K 5% 1/10W	R617	1-216-097-00	METAL CHIP	100K 5% 1/10W
R120	1-216-057-00	METAL CHIP	2.2K 5% 1/10W	R618	1-216-097-00	METAL CHIP	100K 5% 1/10W
R121	1-216-093-00	METAL CHIP	68K 5% 1/10W				
R201	1-216-089-00	METAL CHIP	47K 5% 1/10W				
R202	1-216-089-00	METAL CHIP	47K 5% 1/10W				
R203	1-216-057-00	METAL CHIP	2.2K 5% 1/10W				
R204	1-216-057-00	METAL CHIP	2.2K 5% 1/10W				
R205	1-216-077-00	METAL CHIP	15K 5% 1/10W				
R206	1-216-061-00	METAL CHIP	3.3K 5% 1/10W				
R207	1-216-082-00	METAL GLAZE	24K 5% 1/10W (AEP, UK, G, AUS)				





**AUDIO(DECK A)**

**AUDIO(DECK B)**

Ref. No.	Part No.	Description	Remark
* A-2006-399-A MOUNTED PCB, AUDIO (DECK A) *****			
< CAPACITOR >			
C11	1-163-131-00	CERAMIC CHIP 390PF	5% 50V
C12	1-136-157-00	FILM 0.022uF	5% 50V
C13	1-124-234-00	ELECT 22uF	20% 16V
C18	1-163-117-00	CERAMIC CHIP 100PF	5% 50V
C21	1-163-131-00	CERAMIC CHIP 390PF	5% 50V
C22	1-136-157-00	FILM 0.022uF	5% 50V
C23	1-124-234-00	ELECT 22uF	20% 16V
C28	1-163-117-00	CERAMIC CHIP 100PF	5% 50V
C31	1-124-234-00	ELECT 22uF	20% 16V
C32	1-124-234-00	ELECT 22uF	20% 16V
C71	1-164-346-11	CERAMIC CHIP 1uF	16V
< CONNECTOR >			
CNJ31	* 1-580-782-11	CONNECTOR, BOARD TO BOARD	
CNP32	* 1-580-772-11	PIN, CONNECTOR (PC BOARD) 4P	
CNP71	* 1-564-719-11	PIN, CONNECTOR (SMALL TYPE) 3P	
CNP72	* 1-580-411-11	SOCKET, CONNECTOR 4P	
< IC >			
IC31	8-759-970-66	IC LM833M	
< JUMPER >			
JW1	1-216-295-00	METAL CHIP 0	5% 1/10W
JW51	1-216-296-00	METAL CHIP 0	5% 1/8W
JW52	1-216-296-00	METAL CHIP 0	5% 1/8W
JW53	1-216-296-00	METAL CHIP 0	5% 1/8W
JW54	1-216-296-00	METAL CHIP 0	5% 1/8W
< TRANSISTOR >			
Q71	8-729-602-36	TRANSISTOR 2SA1602	
< RESISTOR >			
R11	1-216-099-00	METAL CHIP 120K	5% 1/10W
R12	1-216-025-00	METAL CHIP 100	5% 1/10W
R13	1-216-100-00	METAL GLAZE 130K	5% 1/10W
R14	1-216-067-00	METAL CHIP 5.6K	5% 1/10W
R21	1-216-099-00	METAL CHIP 120K	5% 1/10W
R22	1-216-025-00	METAL CHIP 100	5% 1/10W
R23	1-216-100-00	METAL GLAZE 130K	5% 1/10W
R24	1-216-067-00	METAL CHIP 5.6K	5% 1/10W
R31	1-216-033-00	METAL CHIP 220	5% 1/10W
R32	1-216-033-00	METAL CHIP 220	5% 1/10W

Ref. No.	Part No.	Description	Remark
R71	1-216-082-00	METAL GLAZE 24K	5% 1/10W
R72	1-216-081-00	METAL CHIP 22K	5% 1/10W
R73	1-216-089-00	METAL CHIP 47K	5% 1/10W
R74	1-216-089-00	METAL CHIP 47K	5% 1/10W
< VARIABLE RESISTOR >			
RV11	1-238-012-11	RES. ADJ. CARBON 1K (PB LEVEL L)	
RV21	1-238-012-11	RES. ADJ. CARBON 1K (PB LEVEL R)	
RV71	1-238-016-11	RES. ADJ. CARBON 10K (NORMAL SPEED)	
RV72	1-238-016-11	RES. ADJ. CARBON 10K (HIGH SPEED)	
*****			
* A-2006-400-A MOUNTED PCB, AUDIO (DECK B) *****			
< CAPACITOR >			
C11	1-163-131-00	CERAMIC CHIP 390PF	5% 50V
C12	1-136-157-00	FILM 0.022uF	5% 50V
C13	1-124-234-00	ELECT 22uF	20% 16V
C14	1-136-273-91	FILM 75PF	5% 630V
C15	1-164-080-11	CERAMIC 390PF	10% 50V
C17	1-163-103-00	CERAMIC CHIP 27PF	5% 50V
C18	1-163-117-00	CERAMIC CHIP 100PF	5% 50V
C21	1-163-131-00	CERAMIC CHIP 390PF	5% 50V
C22	1-136-157-00	FILM 0.022uF	5% 50V
C23	1-124-234-00	ELECT 22uF	20% 16V
C24	1-136-273-91	FILM 75PF	5% 630V
C25	1-164-080-11	CERAMIC 390PF	10% 50V
C27	1-163-103-00	CERAMIC CHIP 27PF	5% 50V
C28	1-163-117-00	CERAMIC CHIP 100PF	5% 50V
C31	1-124-234-00	ELECT 22uF	20% 16V
C32	1-124-234-00	ELECT 22uF	20% 16V
C33	1-124-234-00	ELECT 22uF	20% 16V
C51	1-163-019-00	CERAMIC CHIP 0.0068uF	10% 50V
C52	1-163-019-00	CERAMIC CHIP 0.0068uF	10% 50V
C53	1-163-022-00	CERAMIC CHIP 0.012uF	10% 50V
C54	1-136-559-11	FILM 0.0047uF	5% 630V
C56	1-164-505-11	CERAMIC CHIP 2.2uF	16V
C57	1-164-346-11	CERAMIC CHIP 1uF	16V
C58	1-163-117-00	CERAMIC CHIP 100PF	5% 50V
C71	1-164-346-11	CERAMIC CHIP 1uF	16V
< CONNECTOR >			
CNJ31	* 1-580-782-11	CONNECTOR, BOARD TO BOARD	
CNJ33	* 1-580-782-11	CONNECTOR, BOARD TO BOARD	
CNP32	* 1-580-781-11	PIN, CONNECTOR (PC BOARD) 7P	
CNP71	* 1-564-719-11	PIN, CONNECTOR (SMALL TYPE) 3P	
CNP72	* 1-580-411-11	SOCKET, CONNECTOR 4P	

**AUDIO(DECK B)**

**PANEL**

Ref. No.	Part No.	Description	Remark
		< DIODE >	
D31	8-719-988-62	DIODE 1SS355	
		< IC >	
IC31	8-759-970-66	IC LM833M	
		< JUMPER >	
JW1	1-216-296-00	METAL CHIP 0 5% 1/8W	
JW2	1-216-295-00	METAL CHIP 0 5% 1/10W	
JW3	1-216-295-00	METAL CHIP 0 5% 1/10W	
JW4	1-216-295-00	METAL CHIP 0 5% 1/10W	
JW5	1-216-295-00	METAL CHIP 0 5% 1/10W	
JW6	1-216-295-00	METAL CHIP 0 5% 1/10W	
JW7	1-216-295-00	METAL CHIP 0 5% 1/10W	
JW52	1-216-296-00	METAL CHIP 0 5% 1/8W	
JW53	1-216-296-00	METAL CHIP 0 5% 1/8W	
JW54	1-216-296-00	METAL CHIP 0 5% 1/8W	
JW55	1-216-296-00	METAL CHIP 0 5% 1/8W	
JW56	1-216-296-00	METAL CHIP 0 5% 1/8W	
JW57	1-216-296-00	METAL CHIP 0 5% 1/8W	
JW58	1-216-296-00	METAL CHIP 0 5% 1/8W	
JW59	1-216-296-00	METAL CHIP 0 5% 1/8W	
JW60	1-216-296-00	METAL CHIP 0 5% 1/8W	
JW61	1-216-296-00	METAL CHIP 0 5% 1/8W	
		< COIL >	
L11	1-410-780-11	INDUCTOR 27mH	
L21	1-410-780-11	INDUCTOR 27mH	
		< TRANSISTOR >	
Q51	8-729-808-01	TRANSISTOR 2SD1622	
Q52	8-729-808-01	TRANSISTOR 2SD1622	
Q53	8-729-808-01	TRANSISTOR 2SD1622	
Q71	8-729-602-36	TRANSISTOR 2SA1602	
		< RESISTOR >	
R11	1-216-099-00	METAL CHIP 120K 5% 1/10W	
R12	1-216-025-00	METAL CHIP 100 5% 1/10W	
R13	1-216-100-00	METAL GLAZE 130K 5% 1/10W	
R14	1-216-067-00	METAL CHIP 5.6K 5% 1/10W	
R15	1-249-430-11	CARBON 12K 5% 1/4W	
R21	1-216-099-00	METAL CHIP 120K 5% 1/10W	
R22	1-216-025-00	METAL CHIP 100 5% 1/10W	
R23	1-216-100-00	METAL GLAZE 130K 5% 1/10W	
R24	1-216-067-00	METAL CHIP 5.6K 5% 1/10W	
R25	1-249-430-11	CARBON 12K 5% 1/4W	
R31	1-216-033-00	METAL CHIP 220 5% 1/10W	

Ref. No.	Part No.	Description	Remark
R32	1-216-033-00	METAL CHIP 220 5% 1/10W	
R41	1-249-393-11	CARBON 10 5% 1/4W	
R42	1-249-393-11	CARBON 10 5% 1/4W	
R51	1-216-075-00	METAL CHIP 12K 5% 1/10W	
R52	1-216-075-00	METAL CHIP 12K 5% 1/10W	
R53	1-216-073-00	METAL CHIP 10K 5% 1/10W	
R54	1-216-309-00	METAL CHIP 5.6 5% 1/10W	
R55	1-216-309-00	METAL CHIP 5.6 5% 1/10W	
R56	1-216-298-00	METAL CHIP 2.2 5% 1/10W	
R71	1-216-082-00	METAL GLAZE 24K 5% 1/10W	
R72	1-216-081-00	METAL CHIP 22K 5% 1/10W	
R73	1-216-089-00	METAL CHIP 47K 5% 1/10W	
R74	1-216-089-00	METAL CHIP 47K 5% 1/10W	

< VARIABLE RESISTOR >

RV11	1-238-012-11	RES. ADJ. CARBON 1K (PB LEVEL L)
RV12	1-238-551-11	RES. ADJ. CARBON 220K (REC BIAS L)
RV21	1-238-012-11	RES. ADJ. CARBON 1K (PB LEVEL R)
RV22	1-238-551-11	RES. ADJ. CARBON 220K (REC BIAS R)
RV71	1-238-016-11	RES. ADJ. CARBON 10K (NORMAL SPEED)
RV72	1-238-016-11	RES. ADJ. CARBON 10K (HIGH SPEED)

< RELAY >

RY31	1-515-726-11	RELAY
------	--------------	-------

< COIL >

T51	1-406-419-11	COIL. BIAS OSCILLATION
-----	--------------	------------------------

\*\*\*\*\*

- \* A-2006-424-A PANEL BOARD, COMPLETE (AEP, UK, G, AUS)
  - \* A-2006-426-A PANEL BOARD, COMPLETE (US, Canadian, E)
- \*\*\*\*\*

- \* 3-367-839-01 HOLDER, FL TUBE
- \* 4-932-810-11 CUSHION (FL)

< CAPACITOR >

C351	1-126-163-11	ELECT 4.7uF 20% 50V
C352	1-124-638-11	ELECT 22uF 20% 10V
C353	1-164-232-11	CERAMIC CHIP 0.01uF 50V
C354	1-164-232-11	CERAMIC CHIP 0.01uF 50V

< CONNECTOR >

CN351	1-580-883-41	SOCKET, CONNECTOR (SMT) 12P
-------	--------------	-----------------------------

**PANEL**

Ref. No.	Part No.	Description	Remark
		< DIODE >	
D351	8-719-301-37	LED SEL2210S-CD (NORMAL SPEED)	
D352	8-719-301-37	LED SEL2210S-CD (HIGH SPEED)	
D353	8-719-301-37	LED SEL2210S-CD (CD SYNCHRO)	
		< FLUORESCENT >	
FL351	1-519-638-11	INDICATOR TUBE, FLUORESCENT	
		< IC >	
IC351	8-759-323-35	IC HD-614023-FA93	
		< RESISTOR >	
R351	1-216-029-00	METAL CHIP 150 5% 1/10W	
R352	1-216-033-00	METAL CHIP 220 5% 1/10W	
R353	1-216-037-00	METAL CHIP 330 5% 1/10W	
R354	1-216-041-00	METAL CHIP 470 5% 1/10W	
R355	1-216-045-00	METAL CHIP 680 5% 1/10W	
R356	1-216-049-00	METAL CHIP 1K 5% 1/10W	
R357	1-216-055-00	METAL CHIP 1.8K 5% 1/10W (US, Canadian, E)	
R357	1-216-067-00	METAL CHIP 5.6K 5% 1/10W (AEP, UK, G, AUS)	
R359	1-216-029-00	METAL CHIP 150 5% 1/10W	
R360	1-216-033-00	METAL CHIP 220 5% 1/10W	
R361	1-216-037-00	METAL CHIP 330 5% 1/10W	
R362	1-216-041-00	METAL CHIP 470 5% 1/10W	
R363	1-216-045-00	METAL CHIP 680 5% 1/10W	
R364	1-216-049-00	METAL CHIP 1K 5% 1/10W	
R365	1-216-067-00	METAL CHIP 5.6K 5% 1/10W	
R366	1-216-295-00	METAL CHIP 0 5% 1/10W	
R367	1-216-089-00	METAL CHIP 47K 5% 1/10W	
R368	1-216-089-00	METAL CHIP 47K 5% 1/10W	
R369	1-216-089-00	METAL CHIP 47K 5% 1/10W	
R371	1-216-049-00	METAL CHIP 1K 5% 1/10W	
R375	1-216-081-00	METAL CHIP 22K 5% 1/10W	
R376	1-216-121-00	METAL CHIP 1M 5% 1/10W	
R377	1-216-085-00	METAL CHIP 33K 5% 1/10W	
R378	1-216-025-00	METAL CHIP 100 5% 1/10W	
R379	1-216-025-00	METAL CHIP 100 5% 1/10W	
R380	1-216-025-00	METAL CHIP 100 5% 1/10W	
R381	1-216-025-00	METAL CHIP 100 5% 1/10W	
		< SWITCH >	
S351	1-572-184-11	SWITCH, KEYBOARD (CD SYNCHRO)	
S352	1-572-184-11	SWITCH, KEYBOARD (<<)	
S353	1-572-184-11	SWITCH, KEYBOARD (>>)	
S354	1-572-184-11	SWITCH, KEYBOARD (00)	
S355	1-572-184-11	SWITCH, KEYBOARD (DECK B)	

Ref. No.	Part No.	Description	Remark
S356	1-572-184-11	SWITCH, KEYBOARD (DECK A)	
S357	1-572-184-11	SWITCH, KEYBOARD (RESET)	
S358	1-572-184-11	SWITCH, KEYBOARD (DOLBY NR)	
S361	1-572-184-11	SWITCH, KEYBOARD (NORMAL SPEED)	
S362	1-572-184-11	SWITCH, KEYBOARD (HIGH SPEED)	
S363	1-572-184-11	SWITCH, KEYBOARD (□)	
S364	1-572-184-11	SWITCH, KEYBOARD (▷)	
S365	1-572-184-11	SWITCH, KEYBOARD (▷)	
S366	1-572-184-11	SWITCH, KEYBOARD (REC ●)	
S368	1-572-184-11	SWITCH, KEYBOARD (DIRECTION)	
		< CERAMIC >	
X351	1-577-359-21	VIBRATOR, CERAMIC	
*****			
MISCELLANEOUS			
*****			
6	1-590-904-11	WIRE, FLAT TYPE (12 CORE)	
22	1-590-579-11	CORD (WITH CONNECTOR)	
23	1-590-902-11	WIRE, FLAT TYPE (9 CORE)	
72	1-638-983-11	PC BOARD, MOTOR FLEXIBLE	
HP901	A-2003-837-A	BASE ASSY, HEAD (DECK A)	
HRPE901	A-2003-838-A	BASE ASSY, HEAD (DECK B)	
M901A	X-3359-417-1	MOTOR ASSY, CAPSTAN	
M901B	X-3359-417-1	MOTOR ASSY, CAPSTAN	
M902A	X-3363-501-1	MOTOR ASSY, REEL	
M902B	X-3363-501-1	MOTOR ASSY, REEL	
*****			
ACCESSORY & PACKING MATERIAL			
*****			
* 4-943-847-01 CUSHION, UPPER (EXCEPT E)			
* 4-943-848-01 CUSHION, LOWER (EXCEPT E)			
*****			
<b>HARDWARE LIST</b>			
*****			
# 1	7-621-773-93	SCREW (PANEL 2.6 TP2)	
# 2	7-621-255-15	SCREW +PTT 2X3 (S)	
# 3	7-685-646-79	SCREW +BVTP 3X8 TYPE2 N-S	
# 4	7-685-870-01	SCREW +BVTT 3X5	
# 5	7-682-547-04	SCREW +BVTT 3X6 (S)	
# 6	7-621-775-00	SCREW +B 2.6X3	
# 7	7-627-556-08	SCREW +P 2.6X2.8	